

# UNISEX SCRUBS FOR MEN + WOMEN

OUTFIT YOUR ENTIRE GROUP  
Whether your crew is 5 or 500+, talk with our industry experts on a program that works for you.

- A, B

Wine
- A, B

Dark Lilac
- A, B

Ceil Blue
- A, B

Eggplant
- A, B

Royal
- A, B

Turquoise
- A, B

Marina
- A, B

Caribbean Blue
- A, B

Dove Grey
- A, B

Espresso
- A, B

Granite
- A, B

Black
- A, B

Navy
- A, B

Olive
- A, B

Hunter
- A, B

Gecko Green
- A, B

Seaspray
- A, B

Red
- A, B

Melon
- A, B

Fuchsia
- A

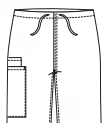
Pink
- A

White
- A, B

Khaki



EVERYDAY SCRUB  
WEAR MADE FROM  
EASY CARE 65/35  
POLY/COTTON



**A. BEST BUY UNISEX ONE POCKET TOP**  
V-neck, set-in sleeves, pen divided chest pocket. Side slits. Approx. length for medium 72cm Available in all colors shown above.  
**XS-XL, 2X-3X**

**B. BEST BUY UNISEX DRAWSTRING PANT**  
Relaxed fit. Straight leg. Matching twill tape drawstring. Side cargo pocket with a secure cell phone pocket inside. Roomy 14cm x 15cm back pocket. Available in select colors shown above.

**REGULAR STYLE #35**  
(Inseam approx. 78cm) **XS-XL 2X-3X**  
**SHORT STYLE #35S**  
(Inseam approx. 71cm) **XS-XL**  
**TALL STYLE #35T**  
(Inseam approx. 84cm) **S-XL**

- C, D

Red
- C, D

Eggplant
- C, D

Royal
- C, D

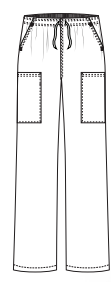
Navy
- C, D

Granite
- C, D


Black



**C. UNISEX CARRY-ALL PANT #F357**



**C. CARRY-ALL PANT**  
Straight leg. Elastic waist with drawstring sits at waist. Relaxed fit through hips and thighs. Total six pockets, with cell phone pocket. Inseam approx. 78cm. Available in all colors shown above.  
**F357 XS-XL, 2X-3X**

 \* For a perfect color match select solids from the same collection.

65/35 POLY/COTTON  
STRETCH TWILL



**D**  
UNISEX  
TOP



C, D  
Navy

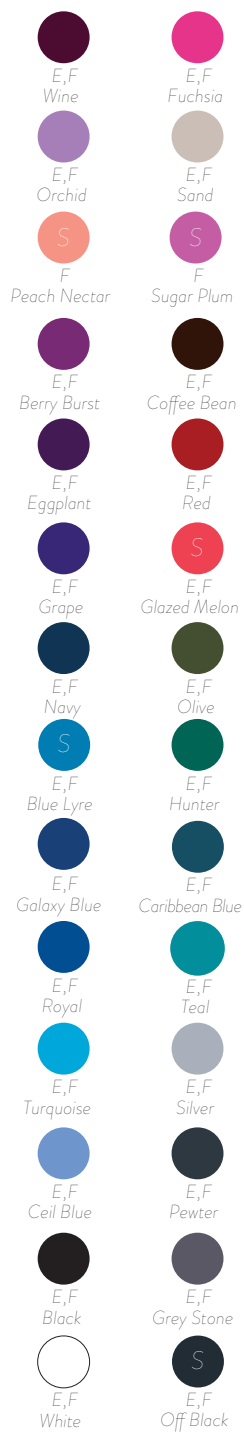


LOOK GOOD  
FEEL GOOD  
FOR LESS!

**D**

**D. UAFLEX® UNISEX TOP**  
Classic V-neck, relaxed fit, side vents.  
Two patch pockets, double chest  
pocket with divider. Approx. length  
for medium 72cm. 2X-3X available  
in all colors shown except Eggplant,  
Red and Royal.

**F719 XS-XL  
2X-3X**



**E**

**E. BUTTER-SOFT UNISEX  
SHORT SLEEVE ONE POCKET  
SCRUB TOP** Suitable for both  
women and men, the set-in sleeves  
are longer, with v-neck, chest  
pocket and side slits. Approx. length  
for medium 73cm. Available in select  
colors shown above.  
**UA71C XS-XL, 2X-3X 4X-5X**  
4X-5X available in all  
colors shown except Red, Fuchsia, Grape,  
Orchid, and Silver.



E, F  
Glazed  
Melon

**E**  
UNISEX TOP

AVAILABLE IN  
26  
SOLID  
COLORS

ALSO  
4X-5X

**F**  
UNISEX  
PANT



AVAILABLE IN  
28  
SOLID  
COLORS

ALSO  
4X-5X

EFFORTLESS  
COMFORT IN  
EASY CARE 65/35  
POLY/COTTON

**F**

**F. BUTTER-SOFT  
UNISEX FOUR POCKET  
CARGO DRAWSTRING  
PANT** Sits above the  
waist with a relaxed fit and  
straight legs. Adjustable  
drawstring waist, two  
side cargo pockets with a  
pocket-in-pocket feature  
on the right, and one back  
pocket. Available in select  
colors shown above.



E, F  
Teal

**REGULAR UA31C** (Inseam  
approx. 77cm) **XS-XL 2X-3X, 4X-5X**

4X-5X available in all colors shown except  
Berry Burst, Fuchsia, Grape, Orchid, Red,  
Turquoise, Silver.

**SHORT UA31CS** (Inseam approx.  
71cm) **XS-XL**

**TALL UA31CT** (Inseam approx. 81cm)  
**XS-XL, 2X**

**A**  
Caribbean Blue  
Style# 705

10  
SOLID  
COLORS  
AVAILABLE IN  
TOP AND PANT AVAILABLE IN



**B**  
Caribbean Blue  
Style# 44



DRAWSTRING  
WAIST

POCKET  
MULTI-TASKER PANT  
7

EVERYDAY SCRUB WEAR POLY/COTTON

White	Ceil Blue	Royal	Caribbean Blue	Wine
Navy	Hunter	Granite	Espresso	Black

**A. BEST BUY FIVE POCKET V-NECK TOP**  
Roomy fit. Approx. length for large 78cm Available in all colors shown above. **STYLE #705 S-XL 2X-3X**

**B. BEST BUY ZIP-FRONT CARGO PANT**  
Elastic waist with drawstring and zip front fly. Four roomy cargo pockets, one back pocket and two side pockets. Inseam approx. 78cm. Available in all colors shown above. **STYLE #44 S-XL 2X-3X**

# the MEN'S SHOP

**C**  
Ceil Blue w/  
Navy  
#STN709C



side - and  
top - entry  
POCKETS

BUTTER-SOFT, EASY CARE POLY/COTTON

**C. BUTTER-SOFT TOP WITH KNIT SIDE INSERTS**

Stretch side knit panels in 88/12 poly/spandex extend from the sides into the front and back neckline. One chest pocket, 2 double - entry front pockets and a hidden cell phone pocket. Approx. length for large 76cm Available in all colors shown below. **STN709C S-XL 2X-3X**

Caribbean Blue w/ Navy	Hunter w/ Navy	Pewter w/ Black	Wine w/ Black	White w/ Black
Ceil Blue w/ Navy	Royal w/ Navy	Navy w/ Navy	Silver w/ Black	Off Black w/ Black
				Black w/ Black

**D. BUTTER-SOFT V-NECK TOP**

Double pockets with pen slot at the left chest. Back yoke and side vent. Approx. length for large 78cm. Available in all colors shown below.

**UAS703C S-XL 2X-3X**

**E. BUTTER-SOFT EIGHT POCKET PANT**

Sits at the waist with straight legs. Silver snap, functioning zip fly and utility loop. Inseam approx. 78cm. Available in all colors shown below.

**UA745C S-XL 2X-3X**

Ceil Blue	Royal	Teal	Caribbean Blue	Silver
Wine	Hunter	Navy	Pewter	Black

**D**  
Hunter  
#UAS703C

10  
SOLID  
COLORS  
AVAILABLE IN  
TOP AND PANT AVAILABLE IN



functioning  
ZIP FLY

**E**  
Hunter  
#UA745C

POCKET  
MULTI-TASKER PANT  
8

\* For a perfect color match select solids from the same collection.

# EXCLUSIVE STYLES JUST FOR MEN



BUTTER-SOFT STRETCH COTTON/POLY/SPANDEX

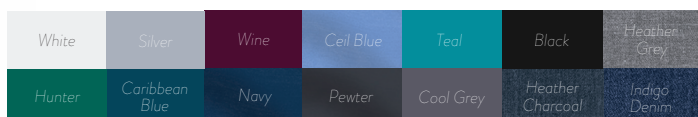
## F. BUTTER-SOFT STRETCH FIVE POCKET V-NECK

TOP Approx. length for large 78cm Available in all colors shown below. **BSS705 S-XL**, 2X-3X

## G. BUTTER-SOFT STRETCH ZIP FRONT CARGO

PANT Four cargo pockets, one back pocket and two side pockets. Inseam approx. length for large 78cm. Available in select colors shown below. **BSS44 S-XL**, 2X-3X

Not available in Heather Charcoal, Indigo Denim and White.



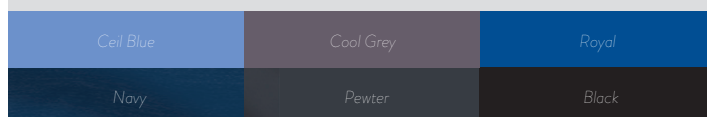
ADVANTAGE FOR MEN POLY/RAYONSPANDEX

## H. ADVANTAGE V-NECK TOP

Double chest pocket. Approx. length for large 76cm Available in select colors shown below except Cool Grey. **AB799 S-XL**, 2X-3X

## I. ADVANTAGE CARGO PANT

Two front pockets, two back pockets and one cargo pocket with cell phone pocket. Inseam approx. length for large 77cm. Available in all colors shown below. **AB857 S-XL**, 2X-3X





74/23/3 POLY/RAYON/SPANDEX TWILL

A. GREY'S ANATOMY™ IMPACT ASCEND V-NECK TOP **STRETCH** crossover V-Neck. Two front side seam pockets. Chest pocket with tape details. Back yoke with tape details. Overlap side slits. Approx. length Large 78cm. Available in all colors shown above. GA0118 **S-XL 2X-3X**

B. GREY'S ANATOMY™ IMPACT ASCEND CARGO PANT **STRETCH** full elastic waist, inner draw cord, functional fly. Two front slash pockets, one back pocket. Tape details on right cargo pocket. Louvered ankle vents. Available in all colors shown above. GA0219 (Inseam approx. 80cm) **S-XL, 2X-3X**



93/7 POLY/SPANDEX OMNI-STRETCH™

C. JOCKEY™ PERFORMANCE RX V-NECK MESH TECH TOP **STRETCH** front and back seaming, one chest pocket with a divided outer pocket, side slits. Mesh is 100% polyester. Approx. length Large 76cm. Available in all colors shown above. J2412 **S-XL, 2X-3X**

D. JOCKEY™ PERFORMANCE RX TECH PANT **STRETCH** natural rise, straight legs, gusset inseam, full elastic waist with micro-pique side out, inside drawstring, functional zipper. Available in all colors shown above. J2413 (Inseam approx. 80cm) **S-XL, 2X-3X**



72/21/7 POLY/RAYON/SPANDEX

E. JOCKEY™ V-NECK MESH TRIM TOP **STRETCH** breathable mesh on front and back shoulder panels, front and back seaming details. Mesh panels are 100% polyester. Approx. length Large 75cm. Available in all colors shown above. J2374 **S-XL, 2X-3X**

F. JOCKEY™ CLASSIC CARGO PANT **STRETCH** straight leg, sits at waist, belt loops, elastic waist with inside drawstring, functional zipper fly. Two front slash pockets, two back zipper pockets. Available in all colors shown above. J2305 (Inseam approx. 78cm) **S-XL, 2X-3X**

## MEN'S STRETCH ATHLEISURE



54/40/6 POLY/RECYCLED POLY/SPANDEX

### G. MEN'S STRUCTURE V-NECK TOP

Chest pocket with pen slot, side panel inset, back yoke. Approx. length Large 80cm. Available in all colors shown above.

SK0112 **S-XL, 2X-3X**

### H. MEN'S STRUCTURE CARGO PANT

Trouser style rise, straight leg, full elastic waist. Two front slash pockets, one cargo pocket with pen slot, one back pocket. Available in all colors shown above.

REGULAR SK0215 (Inseam approx. 81cm)  
**S-XL, 2X-3X**

SHORT SK0215S (Inseam approx. 76cm)  
**S-XL**



55/42/3 COTTON/POLY/  
SPANDEX STRETCH TWILL

### I. koi™ STRETCH TYLER V-NECK TOP

**STRETCH** chest pocket, two front pockets, outer pocket, pen pocket. Triple stitch details, side slits. Approx. length Large 80cm. Available in all colors shown above.

K665 **S-XL, 2X-3X**

### J. koi™ STRETCH RYAN CARGO PANT

**STRETCH** elastic waist, functional zipper fly, hidden inner adjustable drawstring. Two front pockets, two back pockets, one double cargo pocket. Triple stitch details. Available in all colors shown above.

REGULAR K604 (Inseam approx. 81cm) **S-XL, 2X-3X**

TALL K604T (Inseam approx. 86cm) **S-XL, 2X-3X**



100% POLYESTER  
95/5 POLY/SPANDEX RIB KNIT TRIM

### K. koi LITE™ FORCE V-NECK TOP

Front and back yokes, stretch knit side panels, side slits. Approx. length Large 80cm. Available in all colors shown above.

K667 **S-XL**

### L. koi LITE™ ENDURANCE CARGO PANT

Straight leg, natural rise, functional drawstring, faux fly, elastic waist, cargo pocket, back pocket. Stretch knit panels inside pockets and hidden gusset. Available in all colors shown above.

REGULAR K603 (Inseam approx. 81cm)  
**S-XL, 2X-3X**

TALL K603T (Inseam approx. 86cm)  
**S-XL, 2X-3X**

## MEN'S STRETCH SCRUBS



52/45/3 COTTON/POLY/SPANDEX

A. WONDERFLEX HONOR UTILITY TOP **STRETCH**, contrast LE badge. Approx. length Large 81cm. Available in all colors shown above. W6618 **S-XL**, 2X-3X

B. WONDERFLEX LOYAL CARGO UTILITY PANT **STRETCH**, straight leg, sits just below natural waist. Flat front, two pockets. Two back pockets, contrast LE badge. Available in all colors shown above. REGULAR W5618 (Inseam approx. 79cm) **S-XL**, 2X-3X  
TALL W5618T (Inseam approx. 86cm) **S-XL** 2X-3X



55/42/3 COTTON/POLY/ SPANDEX TWILL

C. CHEROKEE ® **CORE STRETCH V-NECK TOP** **STRETCH**, Back yoke, side slits. Approx. length Large 79cm. Available in all colors shown above. CK4743 **XS-XL**, 2X-3X 4X-5X

D. CHEROKEE ® **CORE STRETCH CARGO PANT** **STRETCH**, natural rise, tapered leg, elastic waist, adjustable drawstring, zipper fly, two slash hip pockets, one back pocket, four cargo pockets, pen slot. Available in all colors shown above. CK4243 (Inseam approx. 78cm) **XS-XL** 2X-3X 4X-5X



95/5 POLY/SPANDEX POPLIN

E. CHEROKEE ® **INFINITY** ® **V-NECK TOP** **STRETCH**, two angled welt pockets, front and back yokes. Approx. length Large 81cm Available in all colors shown above. IN900 **S-XL** 2X-3X

F. CHEROKEE ® **INFINITY** ® **CARGO PANT** **STRETCH**, sits at waist, tapered leg, zip fly with button closure, inside drawstring, elastic back waist, belt loops, two front slash pockets, double cargo pockets, back pocket, ID loop, removable metal carabiner. Available in all colors shown above. IN200 (Inseam approx. 81cm) **S-XL** 2X-3X

## FOR MEN - STRETCH



78/20/2 POLY/RAYON/SPANDEX TWILL

G. DICKIES® **ESSENCE V-NECK TOP STRETCH**, chest pocket, back pocket, side panels, triple utility loop, signature brass topstitching. Approx. length Large 79cm. Available in all colors shown above. D630 **XS-XL, 2X-3X, 4X-5X**

H. DICKIES® **ESSENCE PANT STRETCH**, Sits slightly below waist, straight leg, half back elastic waist, belt loops, inner drawstring, functional zipper fly, button closure. Two front pockets, two back pockets, two cargo pockets. Available in all colors shown above.

REGULAR D160 (Inseam approx. 81cm) **XS-XL 2X-3X, 4X-5X**

SHORT D160S (Inseam approx. 73cm) **XS-XL 2X-3X**

52/45/3 COTTON/POLY/SPANDEX TWILL

I. DICKIES® **GEN FLEX YOUTILITY V-NECK TOP STRETCH**, contrast top stitching (White has tonal top stitching), back yoke. Sleeve pocket with pen loops, side panels with side pockets. Approx. length Large 79cm. Available in all colors shown above. D81722 **XS-XL, 2X-3X 4X-5X**

J. DICKIES® **GEN FLEX YOUTILITY PANT STRETCH**, Natural rise, straight leg, elastic waist, drawstring, triple pen holder with bungee loop. Available in all colors shown above.

REGULAR D81003 (Inseam approx. 81cm) **XS-XL 2X-3X, 4X-5X**

TALL D81003T (Inseam approx. 89cm) **S-XL 2X-3X**, Tall not available in White

91/9 POLY/SPANDEX

K. DICKIES® **DYNAMIX™ MEN'S V-NECK TOP STRETCH**, bungee ID loop, front and back yokes, chest pocket, seaming details, side slits. Approx. length Large 79cm. Available in all colors shown above. D610 **S-XL, 2X-3X 4X-5X**

L. DICKIES® **DYNAMIX™ DRAWSTRING PANT STRETCH**, button zip fly, inner drawstring, elastic waist. Two slash pockets, one zipper cargo pocket, one cargo pocket, two back pockets. Utility loops, stitching details. Available in all colors shown above.

REGULAR D110 (Inseam approx. 81cm) **S-XL, 2X-3X, 4X-5X**

TALL D110T (Inseam approx. 90cm) **S-XL 2X-3X**

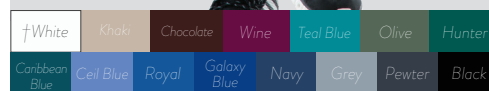


65/35 POLY/COTTON  
**A. LANDAU® SNAP FRONT JACKET**  
 Two patch pockets, cell phone pocket, inside pocket. Approx. length for large 86cm  
 Available in all colors shown above.  
 L7551 **S-XL**, 2X-3X

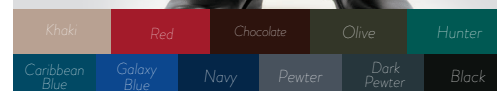
**B. LANDAU® ZIP FRONT CARGO PANT**  
 Straight leg, sits at waist, elastic waistband, inner drawstring, zipper fly. Two side pockets, one back pocket, four cargo pockets.  
 Available in all colors shown above.  
 L8555 (Inseam approx. 81cm) **S-XL**, 2X-5X

#### BUYING HINT

When purchasing solids, it's best to select from the same collection to ensure a perfect color match.



65/35 POLY/COTTON POPLIN WITH SOIL RELEASE  
**C. CHEROKEE® WORKWEAR UNISEX TOP**  
 V-neck. Regular approx. length Large 78cm, Tall approx. length Large 84cm. **REGULAR CK4876 XXS-XL**, 2X-3X 4X-5X, Regular, available in all colors shown above. **TALL CK4876T S-XL**, 2X-3X 4X-5X, Tall available in Black, Ceil Blue, Grey, Navy, Royal and Wine.  
**D. CHEROKEE® WORKWEAR UNISEX DRAWSTRING PANT** Traditional classic fit, sits at natural waist, tapered leg, adjustable webbed drawstring. One cargo pocket, one back pocket. Available in all colors shown above.  
**REGULAR CK4100 (Inseam approx. 78cm) XXS-XL, 2X-3X, 4X-5X**  
**SHORT CK4100S (Inseam approx. 71cm) XS-XL, 2X-3X**  
**TALL CK4100T (Inseam approx. 84cm) S-XL 2X**



**RIPSTOP FABRIC 55/45 COTTON/POLY**  
**E. CARHARTT® UTILITY V-NECK TOP**  
 Back yoke, back is 4cm longer than front. Approx. length Large 79cm. Available in all colors shown above. **C15108 S-XL**, 2X-3X

**F. CARHARTT® MULTI-CARGO PANT**  
 Straight leg, sits slightly below waist, utility loop, zipper fly, drawstring, half elastic waist. Eight pockets, tradesman cargo pockets. Available in all colors shown above.  
**REGULAR C54108 (Inseam approx. 78cm) S-XL, 2X-3X**  
**SHORT C54108S (Inseam approx. 71cm) S-XL, 2X-3X**  
**TALL C54108T (Inseam approx. 86cm) S-XL, 2X-3X**

White 55/45 Cotton/Poly

COMFORT. FIT. EASY CARE.



BRUSHED 55/45 COTTON POPLIN/POLY

#### G. DICKIES® EDS SIGNATURE V-NECK

**TOP** Back yoke, center back seam, side slits. Two patch pockets. Galaxy Blue stretch knit interior pocket (White has a White knit pocket). Approx. length Large 79cm. Available in all colors shown above. D81906 **S-XL** 2X-3X, 4X-5X

**H. DICKIES® EDS SIGNATURE ZIP FLY**  
**PANT** Straight leg, sits at waist, elastic waist, button closure, interior drawstring. Two front pockets, one cell phone pocket. Available in all colors shown above.

REGULAR D81006 (Inseam approx. 80cm)  
**S-XL**, 2X-3X, 4X-5X

TALL D81006T (Inseam approx. 86cm)  
**S-XL**, 2X-3X Tall not available in Red, White and Wine.

MOISTURE WICKING,

#### I. GREY'S ANATOMY™ DEREK

**TOP** Nickel binding inside back neck, light Silver bar tacks, slim silhouette, side slits. Double chest pocket with pen slot. Sleeve pocket, high-low hem, badge loop. Approx. length Large 79cm Available in select colors shown above. GA0107 **S-XL**, 2X-5X

#### J. GREY'S ANATOMY™ V-NECK

**TOP** Twill tape accents, double chest pocket. Approx. length Large 81cm. Available in all colors shown above. GA0103 **S-XL** 2X-5X

SOIL RESISTANT ARCLUX™ 77/23 POLY/RAYON

**K. GREY'S ANATOMY™ DEREK PANT** Slim fit, slightly tapered leg, sits at waist, full elastic waist, Nickel drawstring. Two side pockets, one back pocket, one cargo pocket, one double cargo pocket, light silver bar tacks. Available in select colors shown above.

REGULAR GA0212 (Inseam approx. 81cm) **S-XL** 2X-5X

TALL GA0212T (Inseam approx. 86cm) **S-XL**

**L. GREY'S ANATOMY™ UTILITY PANT** Straight leg, sits at waist, rib knit covered elastic waist, drawstring, zipper fly. Two front pockets, one back pocket, one inside pocket. Available in all colors shown above.

REGULAR GA0203 (Inseam approx. 82cm)  
**S-XL**, 2X-5X

TALL GA0203T (Inseam approx. 87cm) **S-XL**

# UNISEX SCRUBS



## A. UNISEX V-NECK TOP

Approx. length Medium 74cm".  
Available in select colors shown below right. D83706 **XS-XL** 2X-3X, 4X-5X

## B. UNISEX DRAWSTRING PANT

Natural rise, adjustable drawstring, back pocket with Galaxy Blue knit interior (White has a White interior). Available in select colors shown below right.  
REGULAR D83006 (Inseam approx. 78cm) **XS-XL**, 2X-3X 4X-5X

SHORT \* D83006S (Inseam approx. 72cm) **XS-XL**, 2X

TALL \* D83006T (Inseam approx. 86cm) **XS-XL**, 2X

\*Available in Black, Caribbean, Ceil Blue, Galaxy, Navy, Pewter, Royal, Teal, White and Wine.



C. **CONTEMPORARY V-NECK TOP** Four patch pockets with divided utility pockets, pencil slots, instrument loop. Back princess seams, side slits. Approx length Medium 27 1/2". Available in select colors shown below. **D85906 XXS-XL**, 2X-3X

D. **MODERN CLASSIC V-NECK TOP** Two patch pockets with stretch knit interior pocket, side slits. Approx. length Medium 72cm. Available in select colors shown below. D86706 **XXS-XL**, 2X-3X, 4X-5X

E. **CONTEMPORARY MOCK WRAP TOP** Empire waist, four patch pockets and pen slot, instrument loop, side slits. Approx. length Medium 70.5cm. Available in select colors shown below. D85820 **XXS-XL**, 2X-3X

F. **CONTEMPORARY CARGO PANT** Low-rise, straight leg, full elastic waist, adjustable drawstring, double needle top stitching, knee seams. Two cargo pockets with pen slots, scissor pocket and utility loop. Available in select colors shown below.

REGULAR D85100 (Inseam approx. 76cm) **XXS-XL**, 2X-3X

PETITE D85100P (Inseam approx. 71cm) **XS-XL**, 2X

TALL D85100T (Inseam approx. 85cm) **S-XL**, 2X

XXS, 4X, 5X not available in Lagoon

Available in Black, Navy, Pewter and Royal

A-H White	A-H Khaki	A-H Hot Pink	A-H Red	A-H Wine	A-H Eggplant	A,B Olive
-----------	-----------	--------------	---------	----------	--------------	-----------

NEW!

STYLES ARE STRETCH 95/5 POLY/SPANDEX POPLIN

A  
Wine  
4X-5X

double twill tape  
UTILITY  
LOOPS

TWO  
CARGO  
POCKETS,  
twill tape  
utility loops

BACK  
SEAMING  
DETAILS

C  
Wine  
4X-5X

B  
Royal  
4X-5X

INNER  
UTILITY  
LOOPS,  
inner  
scissor  
pocket

#### UNISEX HAT

Inner terry cloth 80/20  
cotton poly sweatband,  
adjustable tie back. 95/5  
poly/spandex poplin.  
Available Black, Caribbean,  
Ceil, Navy, Pewter, Royal  
and Wine. One Size fits  
most. D0502

D. WOMEN'S WARM UP  
JACKET Front shoulder yokes with  
snap closure utility loops, stretch knit  
cuffs. Back princess seams. Approx.  
length Medium 73,5cm. Available  
in select colors shown below.  
D305 **XS-XL, 2X-3X**

E. WOMEN'S MOCK WRAP TOP  
Bungee ID loop, two patch pockets  
with twill tape utility loop and pen  
slot. Side slits, back yoke. Approx.  
length Medium 70cm. Available in  
select colors shown below. D625  
**XXS-XL, 2X-3X**

F. WOMEN'S V-NECK TOP  
Front shoulder yokes, two front patch  
pockets with inner utility loops, twill  
tape loop and a pen slot. Side slits,  
back princess seams. Approx. length  
Medium 70cm Available in all colors  
shown below. D615 **XXS-XL  
2X-3X**

G. WOMEN'S DRAWSTRING  
CARGO PANT Mid-rise, straight  
leg. Two front slash pockets, drawstring  
two cargo pockets, scissor pocket,  
twill tape utility loops and two back  
pockets. Ankle vents. Available in  
select colors shown below.

REGULAR D010  
(Inseam approx. 77,5cm)  
**XXS-XL, 2X-3X**

PETITE D010P  
(Inseam approx. 71cm)  
**XXS-XL, 2X**

TALL D010T  
(Inseam approx. 85cm)  
**S-XL, 2X**

Tall not available in Ravishing Coral

#### A. MEN'S V-NECK TOP

Chest pocket with utility loop  
and pen slot. Back yoke, side  
slits. Approx. length Large 76cm  
Available in select colors shown  
below. D635 **S-XL, 2X-3X  
, 4X-5X**

#### B. MEN'S V-NECK TOP

Chest pocket with utility loop  
and pen slot. Two front patch  
pockets, side slits, back yoke, back  
seaming details. Approx. length  
Large 79,5cm Available in select  
colors shown below. D645 **S-XL  
, 2X-3X, 4X-5X**

#### C. MEN'S CARGO PANT

Natural rise, straight legs. Elastic  
back waist, belt loops, functional  
zipper fly, button closure and inner  
drawstring. Two front slash pockets  
and two back pockets. Available in  
select colors shown below.

REGULAR D015  
(Inseam approx. 81cm)  
**S-XL, 2X-3X 4X-5X**

SHORT D015S  
(Inseam approx. 75cm)  
**S-XL, 2X-3X**

TALL D015T  
(Inseam approx. 89cm)  
**S-XL, 2X-3X**

E-H  
Ravishing Coral

A-H  
Wine

A-H  
Caribbean Blue

E-H  
Turquoise

A-H  
Ceil



C  
Darth On  
Holiday

NEW  
PRINT!

D  
Shocking  
Pink

4X-5X

CUSTOMER  
FAVORITE!

DOLMAN  
SLEEVES

E  
Color Me  
Eeyore

NEW  
PRINT!

F  
Black

4X-5X

G  
Shocking  
Pink

4X-5X

CUSTOMER  
FAVORITE!

H  
Turquoise

Blue

B, D, F, G, H  
Hunter

D, G, H  
Mali-blu

B, D, G, H  
Turquoise

B, D, F, G, H  
Cell Blue

B, D, F, G, H  
Royal

B, D, F, G, H  
Galaxy Blue

B, D, F, G, H  
Navy

B, D, F, G, H  
Grey

B, D, F, G, H  
Pewter

B, D, F, G, H  
Black

# STRETCH COLLECTION



A  
Wine

4X-5X

CHEST  
POCKET

single  
CARGO  
POCKET

double  
CARGO  
POCKET

D  
Wine

4X-5X

functional  
ZIPPER FLY  
with button  
closure

9  
COLORS



B  
White

CREW  
NECK



C  
Navy

4X-5X

RIB KNIT  
TRIM  
along neck  
and cuffs

**A. MEN'S V-NECK TOP** Two front patch pockets with inner utility loops and one inner pocket, back yoke, side slits. Approx. length Large 78cm. Available in all colors shown below. CK695 **XS-XL**, 2X-3X, 4X-5X

**B. MEN'S LONG SLEEVE TEE** Approx. length Large 78cm . 95/5 rayon/spandex knit. Available in Black, Navy, and White. CK700 **S-XL** 2X

**C. MEN'S WARM UP JACKET** Full snap closure, two front patch pockets, one inner pocket, back yoke. Approx. length Large 82cm. Available in all colors shown below. CK360 **S-XL**, 2X-3X, 4X-5X

**D. MEN'S CARGO PANT** Mid-rise, tapered legs, full elastic waist, drawstring. Two front slash pockets, one cargo pocket, and one back pocket. Available in all colors shown below.

REGULAR CK0190 (Inseam approx. 81cm) **XS-XL**, 2X-3X 4X-5X

SHORT CK0190S (Inseam approx. 75cm) **XS-XL**, 2X-3X

TALL CK0190T (Inseam approx. 89cm) **S-XL**, 2X

\* Extended sizes are priced higher.

**E. WOMEN'S SNAP FRONT WARM-UP JACKET** Modern classic fit, two front patch pockets, cell phone pocket, front and back yokes, side slits. Approx. length Medium 75cm . Available in all colors shown below. CK340 **XXS-XL**, 2X-3X 4X-5X

**F. WOMEN'S MOCK WRAP TOP** Modern classic fit, instrument loops, pen slot, back yoke, side slits. Approx. length Medium 73cm. Available in all colors shown below. CK655 **XXS-XL**, 2X-3X, 4X-5X

**G. WOMEN'S V-NECK TOP** Modern classic fit, two front patch pockets, cell phone pocket, back yoke, side slits. Approx. length Medium 71.5cm . Available in all colors shown below. CK665 **XXS-XL**, 2X-3X 4X-5X

A, C-I Wine	A, C-I	A, C-I Caribbean	A, C-I Cell	A, C-I Royal	A, C-I Galaxy
----------------	--------	---------------------	----------------	-----------------	------------------

EXCEPTIONAL VALUE • STRETCH COMFORT • MODERN, SOFT & DURABLE

## MEN'S

SOLID STYLES ARE  
78/20/2 POLY/RAYON/SPANDEX TWILL

**A. MEN'S V-NECK TOP** Front and back yokes, locker loop, side slits. Approx. length Large 79cm. Available in select colors shown below. CK690  
**XS-XL, 2X-3X**  
4X-5X, 4X-5X not available in Grey

**B. MEN'S CARGO PANT** Tapered leg, drawstring, back elastic waistband. Two slash pockets, one inner pocket, two back pockets, ID bungee loop. Available select colors shown below.

REGULAR CK140 (Inseam approx. 81cm) **XS-XL, 2X-3X**  
4X-5X, 4X-5X not available in Grey  
SHORT CK140S (Inseam approx. 75cm) **XS-XL, 2X-3X**

**C. NEW! MEN'S SPEED RACER V-NECK TOP** Upper chest pocket. Side slits. Approx. length Large 76cm. 97/3 cotton poplin/spandex.

Black, Grey, Navy, Red and Royal.  
**CK675SPR XS-XL 2X-3X, 4X-5X**

**D. NEW! SPEED RACER SURGICAL HAT** Inner 80/20 Cotton/Poly terry cloth sweatband. Elasticized back with adjustable tie. 97/3 cotton poplin/spandex. Coordinates with top style CK675SPR (shown right) CK500SPR ONE SIZE  
**FITS MOST**

**E. WOMEN'S SNAP-FRONT JACKET** Rib knit cuffs, back yoke, back seaming details. Elastic utility loops inside left pocket. Approx. length Medium 75cm. Available in select colors shown below. CK310 **XS-XL 2X-3X**

**F. WOMEN'S MOCK WRAP TOP** Front shoulder yokes, side slits. Double elastic utility loops, bungee ID loop. Two patch pockets. Approx. length Medium 75cm. Available in select colors shown below. CK610 **XS-XL 2X-3X**

**G. WOMEN'S V-NECK TOP** Back princess seams, side slits. Two patch pockets, pen slot, bungee ID loop, utility loop. Approx. length Medium 75.5cm". Available in all colors shown below. CK620 **XS-XL 2X-3X**

ONE  
CARGO  
POCKET  
with outer  
divided snap  
pocket

CHEST  
POCKET  
with pen slot  
and bungee  
ID loop

C  
Speed  
Racer

NEW  
PRINT!

D  
Speed  
Racer

NEW  
HAT!

## H. NEW! SHORTER LENGTH

**V-NECK TOP** Front shoulder yokes. Two front angled patch pockets with utility loops. Side slits. Approx. length Medium 66cm. Available in select colors shown below. **CK710 XS-XL 2X-3X**

## I. WOMEN'S CARGO PANT

Mid-rise, straight leg, bungee ID loop. Two slash pockets, one cargo pocket, stretch knit waistband, one back pocket, knee seams. Available in select colors shown below.

REGULAR CK110 (Inseam approx. 79cm) **XS-XL, 2X-3X**

PETITE CK110P (Inseam approx. 72cm) **XS-XL, 2X**

TALL CK110T (Inseam approx. 86cm) **XS-XL, 2X**

## J. DRAWSTRING CARGO PANT

Mid-rise, flare leg, elastic back waistband, seam details. Two slash pockets, two cargo pockets, one back pocket, bungee ID loop, ankle vents. Available in all colors shown below.

REGULAR CK120 (Inseam approx. 79cm) **XS-XL, 2X-3X**

PETITE CK120P (Inseam approx. 72cm) **XS-XL, 2X**

TALL CK120T (Inseam approx. 86cm) **XS-XL, 2X**

Tall not available in Oh So Orchid

NEW COLOR!

A, B, E-G, I, J  
Red

A, B, E-J  
Wine

G, J  
Oh So Orchid

E-G, I, J  
Eggplant

A, B, E-J  
Teal

E  
Teal

THREE  
POCKETS ,  
one chest pocket  
and two angled  
front pockets



37.5 technology works with your body's own perspiration and heat to dramatically increase the cooling effect.

G  
Pewter

53/44/3 POLY/COCONA  
POLY/SPANDEX

**E. MEN'S  
ATHLETIC V-NECK** Knit mesh side insets, side slits, shirttail hemline, flatlock stitching details. Approx. length Large 79cm. Available in all colors shown below, except Hot Pink. W6213 **S-XL**, 2X-3X

**F. MEN'S  
CARGO PANT** Mid-rise, half elastic waistband, two front slash pockets, one inner pocket, two cargo pockets, two back pockets, knit mesh insets on hips, flatlock stitching details. Available in all colors shown below, except Hot Pink. W5213 (Inseam approx. 79cm) **S-XL**, 2X-3X

**G. WOMEN'S  
V-NECK** Front and back shoulder yokes, two front angled pockets, back slits, flatlock stitching details throughout. Approx. length Medium 67cm. Available in all colors shown below. W6113 **XS-XL**, 2X-3X

**H. WOMEN'S CARGO PANT** Mid-rise, straight leg, two front slash pockets, two stylized cargo pockets, two back pockets, flatlock stitching details. Available in all colors shown below.

**REGULAR** W5113 (Inseam approx. 79cm) **XS-XL**, 2X-3X

**PETITE** W5113P (Inseam approx. 72cm) **XS-XL**, 2X-3X

**TALL** W5113T (Inseam approx. 83cm) **XS-XL**

F  
Teal

BUTTON  
CLOSURE  
functional zipper  
fly and inner  
drawstring

STRAIGHT LEG  
with ankle vents

H  
Pewter



STRETCH  
KNIT WAIST  
with inner  
drawstring

ANKLE VENTS  
with knit mesh  
insets