

# KECH VETPRO

NEW STYLES IN  
OUR EXCLUSIVE  
COLLECTIONS



3



8

Nouvelles  
Nuances

A

13  
COULEURS

ASYMMETRICAL  
NECK TOP WITH  
TRIM **NEW** Ladder-  
lace trim at neckline,  
sleeves and pockets. Two  
deep pockets with cell  
phone pocket. Tailored  
fit, back darts and side  
vents. Approx. length  
68cm. Butter-Soft, easy  
care poly/cotton. Shown  
in Glazed Melon w/  
Navy trim.

**UA773C XS-XL,**  
2X-3X



NOTRE COLLECTION EXCLUSIVE  
OUR EXCLUSIVE COLLECTION



## PANTALON PARFAIT

TROUVEZ VOTRE  
AJUSTEMENT PARFAIT  
ET STYLE





## CONFORT SANS EFFORT DANS DES COULEURS DOUCES ET SOPHISTIQUÉES



65/35 poly/cotton.

### A. V-NECK WITH KNIT INSET

Soft stretch poly-spandex "V" inset and side panels. Two double front pockets and side slits. Approx. length for medium 69cm. Knit is poly/spandex. Shown in Silver/Black. Available in all color combinations shown Left. **STN868C XS-XL 2X-3X**

### B. MANDARIN COLLAR TOP

Tailored, five snap henley-style, decorative piping, back darts, and side slits. Four front pockets. Approx. length for medium 71cm. Shown in Peach Nectar. Available in select colors shown below. **UAS578C XS-XL 2X-3X**

### B. MANDARIN COLLAR TOP

Tailored, five snap henley-style, decorative piping, back darts, and side slits. Four front pockets. Approx. length for medium 71cm. Shown in Peach Nectar. Available in select colors shown below. **UAS578C XS-XL 2X-3X**

### C. ASYMMETRICAL NECK TOP

Two front double pockets. Contrast trim. Back darts and side slits. Approx. length 69cm. Shown in Navy/Peach Nectar. Available in all color combinations shown right. **UA658C XS-XL 2X-3X, 4X-5X**

### C. ASYMMETRICAL NECK TOP

Two front double pockets. Contrast trim. Back darts and side slits. Approx. length 69cm. Shown in Navy/Peach Nectar. Available in all color combinations shown right. **UA658C XS-XL 2X-3X, 4X-5X**







- Berry Burst/Black
- Caribbean Blue/Black
- Silver/Black
- Navy/Navy
- Sugar Plum/Navy
- Royal/Black
- Black/Black
- Galaxy Blue/Navy
- Glazed Melon/Navy
- Pewter/Black

**D. ASYMMETRICAL NECK TOP WITH TRIM** *NEW* Ladder-lace trim at neckline, sleeves and pockets. Two deep pockets with cell phone pocket. Tailored fit, back darts and side vents. Approx. length 68cm. Butter-Soft, easy care poly/cotton. Shown in Silver/Black. Available in all color combinations shown above. **UA773C XS-XL, 2X-3X**

**E. CRISS CROSS V-NECK TOP** Two front patch pockets and an additional smaller pocket with divider stitch, darts and side slits ensure a comfortable and custom fit. Approx. length for medium 68cm. Shown in Peach Nectar. Available in select colors shown below.

**UAS626C XS-XL 2X-3X 4X-5X**







**A. RAGLAN MOCK WRAP TOP** Two front pockets, back darts. Self trim on wrap line, pockets and sleeves. Approx. length for medium 70cm. Soft, easy care poly/cotton. Shown in Sugar Plum. Available in select colors shown below. **WTS669C XS-XL, 2X-3X**

**B. MOCK WRAP CROSSOVER TOP** Two double "tulip" pockets. Back darts and side slits. Approx. length for medium 70cm. Butter-Soft, easy care poly/cotton. Shown in Grey Stone. Available in select colors shown below. **UAS628C XS-XL, 2X**



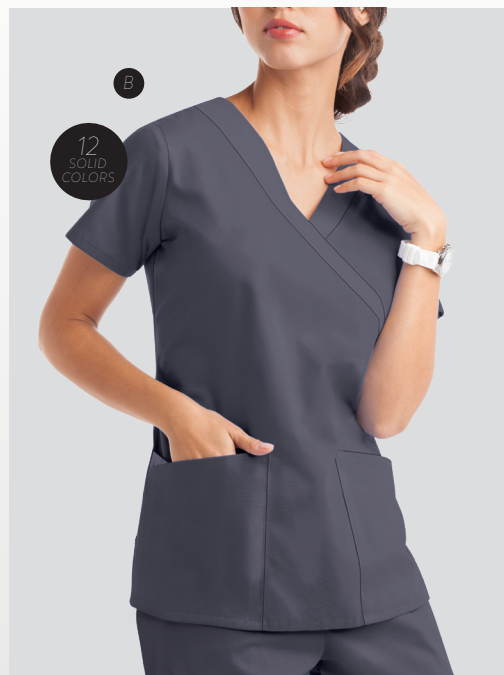
ELASTIC WAIST



DRAWSTRING



CARGO



**C. MOCK WRAP TOP WITH SIDE DRAWSTRING TIE** Self trim along the v-neckline, sleeves, drawstring and casing. Two deep scoop pockets. Side slits. Shown in Eggplant. Approx. length for medium 71cm. **UAS28C XS-XL, 2X-3X**

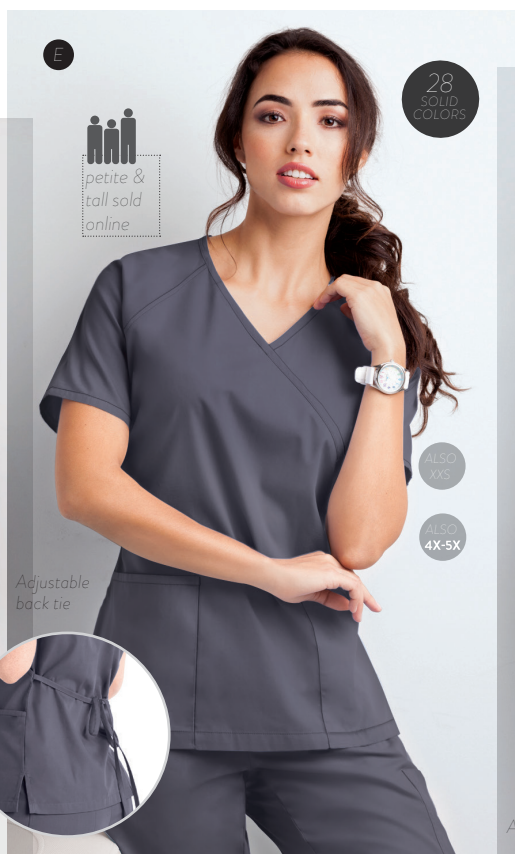




# WARDROBE MUST-HAVES, THESE WRAPS ARE DESIGNED FOR COMFORT



**D. MOCK WRAP CONTRAST TOP**  
Shown in Sugar Plum/Grey Stone. Available in contrast colors shown below. **WT668C XS-XL 2X-3X**



**E. MOCK WRAP SOLID TOP** Adjustable back ties. Two front pockets. Approx. length for medium 68cm. Shown in Grey Stone. Available in all colors shown below.

**WTS668C XS-XL, 2X-3X**

**WTS668C XXS** Available only in Glazed Melon, Lime Ginger, Peach Nectar, Fuchsia, Ballet Pink, Sugar Plum, Orchid, Eggplant, Navy, Royal, Blue Lyre, Turquoise, Ceil Blue, Teal, Grass Green, Wine, White, Silver, Grey Stone, Pewter, Off Black and Black.

**WTS668C 4X-5X** Available only in Glazed Melon, Lime Ginger, Peach Nectar, Fuchsia, Sugar Plum, Eggplant, Navy, Royal, Blue Lyre, Turquoise, Ceil Blue, Caribbean Blue, Wine, White, Pewter, and Black.



**F. EMPIRE WAIST MOCK-WRAP** Adjustable back tabs. Two pockets, with pen slot. Back darts and side vents. Approx. length for medium 86cm. Shown in Eggplant. Available in select colors shown below.

**UAS887C XS-XL, 2X-3X**

65/35 poly/cotton.







**A. Y-NECK SNAP FRONT TOP**

Five snap front placket with piping. Four pockets, two with snap tabs. Front and back darts, side vents. Approx. length for medium 68cm. Shown in Grey Stone. Available in select colors shown below.

UAS606C **XS-XL, 2X**

**B. LOVELY LACE**

**NEW** Burnout finish. 60/40 cotton/poly. Approx. length 68cm. Available in Navy, White and Black.

KN999BLL **XS-XL 2X-3X**

**C. KEY HOLE NECK COLOR BLOCK**

Keyhole neckline and raglan sleeves with contrast banding and color block. Miniature button at the center front neckline. 2 scoop triangle pockets, side slits and back darts. Shown in Sugar Plum/ Navy/ Grey Stone. Available in all color combinations shown below

UA525C **XS-XL, 2X-3X**





# Nouvelles Nuances

DOUCEUR ET CONFORT INCROYABLE  
JUSTE À TEMPS POUR LE PRINTEMPS



D

16  
SOLID  
COLORS



11  
SOLID  
COLORS

E



F

14  
SOLID  
COLORS

**D. THE UTILITY OVERALL TOP**  
Romper has overall design with straps that button in front, five pockets, side vents, and back darts. Approx. length for medium 69cm. Shown in Grey Stone. Available in select colors shown below  
**UAS208C XS-XL , 2X-3X**

**E. SCALLOP NECK TOP**  
UA's signature scallop neck is combined with 3/4 sleeves with notched cuff. Four pockets and hidden cell pocket. Two back darts and side slit. Approx. length for Medium 70cm. Shown in Navy. Available in select colors shown below.  
**UAS958C XS-XL , 2X-3X**

**F. PULLOVER HOODIE**  
Jacket features media port access, four pockets, back darts and side slits. Approx. length for medium 71cm. All colors have contrast stripe cord, White has White. Shown in Sugar Plum. Available in select colors shown below.  
**UAS733C XS-XL , 2X-3X**

65/35 poly/cotton.





A. **DOLMAN SLEEVE TOP** Two patch pockets and one cell phone pocket, side vents. Approx. length for medium 68cm. Shown in Navy. Available in select colors shown below.

**UAS289C XS-XL 2X-3X**

B. **FOUR POCKET V-NECK TOP**

V-neck top has four front pockets, back darts. Approx. length for medium 68cm. Shown in Blue Lyre. Available in select colors shown below. **UAS697C XS-XL ; 2X-3X**

C. **TWO POCKET V-NECK TOP** Two big front pockets. Loose fitting V-neck. Approx. length for medium 68cm. Shown in Lime Ginger. Available in select all colors shown below.

**PC62C XS-XL , 2X-3X**

D. **CREW NECK LONG SLEEVE TEE** Self neck binding. Perfect for layering. Approx. length for medium 68cm. Made of 58/38/4 cotton/poly/spandex. Shown in Navy. Available in colors shown below.

**KN232 XS-XL , 2X-3X**





# THE ESSENTIALS

BASICS AREN'T SO BASIC WHEN THEY'RE IN A NEW SPRING SHADE



E

29  
SOLID  
COLORS



E

## E. ROUNDED V-NECK FIVE POCKET TOP

Decorative chest snap tab pocket, two double pockets with functional snap tabs. Self or contrast trim. Back darts and side slits. Approx. length 71cm. Shown in Lime Ginger and Blue Lyre/Lime Ginger. Available in all color combinations shown below and select solids shown far below. UA638C XS-XL, 2X-3X



Easy care 65/35 poly/cotton.





# Nouvelles Nuances



A

17  
SOLID  
COLORS



C

21  
SOLID  
COLORS



B

14  
SOLID  
COLORS

ALSO  
4X-5X

**A. KEYHOLE NECK TOP**  
Sleeves and neckline finished in pearl stitch. Rhinestone button. Two front double patch pockets and pen pocket. Back darts and side slits. Approx. length for medium 68cm. Shown in Navy. Available in select colors shown below. **RS538C XS-XL 2X-3X**

**B. CONTRAST CRISS CROSS V-NECK TOP** Two front patch pockets and an additional smaller pocket with divider stitch, darts and side slits ensure a comfortable and custom fit. Approx. length for medium 68cm. Shown in Blue Lyre/Lime Ginger. Available in all color combinations shown below. **UA626C XS-XL 2X-3X, 4X-5X**

Blue Lyre/ Lime Ginger	Turquoise/Royal
Royal/ Turquoise	Black/Red
Black/Silver	Teal/Navy
Fuchsia/Black	Glazed Melon/ Black
Ceil Blue/ Navy	Pewter/Fuchsia
Silver/Black	Wine/Silver
Peach Nectar/ Silver	Navy/Ceil Blue

**C. RHINESTONE V-NECK TOP** Rhinestone appliqué. Four front pockets. Back darts and side slits. Approx. length 69cm. Shown in Blue Lyre. Available in select colors shown below. **RS594C XS-XL, 2X-3X**







**D. SCALLOP NECK TOP**  
V-scoop neckline, four front pockets, back darts and side slits. Approx. length for medium 69cm. Shown in Lime Green. Available in all colors shown below. **XXS-XL 2X-3X**

Also available in all colors shown below.  
Berry Burst, Fuchsia, Orchid, Red and Silver.

D

31  
SOLID  
COLORS

ALSO  
4X-5X



**E. WARM UP JACKET**  
Snap front closure with rounded collar. Two large pockets and knit cuffs. Shown in Blue Lyre. Approx. length for medium 71cm.

**E1. PC82C XS-3X** Available in all colors shown below.  
**XS-XL 2X-3X**

**E2. PC82C 4X-5X**  
Available in select colors shown below.  
**4X-5X**



E

ALSO  
4X-5X

**F. BUTTON FRONT WARM UP JACKET**  
Round neck, button front closure, two large scoop pockets, hidden cell phone pocket and self fabric cuffs with slits. Shown in Navy. Available in select colors shown below.

**REGULAR PC86C**  
Approx. length for medium 71cm. Available in select colors shown below.  
**XXS-XL, 2X**

**PETITE PC86CP** Approx. length for medium 68cm.  
**XXS-XL**

**TALL PC86CT** Approx. length for medium 79cm.  
**S-XL, 2X**

Petite and Tall available in Black, Blue Lyre, Ceil, Grey Stone, Navy, Pewter, Royal, Silver, Teal, Turquoise, White and Wine.

65/35 poly/cotton.



ALSO  
XXS



25  
SOLID  
COLORS

F

regular  
petite  
& tall



# Nouvelles Nuances



A

13  
SOLID  
COLORS

Side tabs  
button in back



**A. EMPIRE WAIST DRESS**  
Darts at the bust. Two front pockets with cell phone pocket. Side tabs button closed at the back darts. Approx. length for medium 110cm. 65/35 poly/cotton. Shown in Glazed Melon. Available in select colors shown below. UAS928C XS-XL 2X-3X



**B. FAUX WRAP DRESS**  
Front and back princess seams, adjustable ties at waist, stitched at chest and waist. Two front pockets, one cell phone pocket. Approx. length 109cm. poly/cotton. Shown in Silver. Available in colors shown below. UA939C XS-XL 2X-3X

B



Adjustable  
back tie

6  
SOLID  
COLORS





# JUSTE À TEMPS POUR LE PRINTEMPS, LES NOU



NEW  
COLOR!

A

C

B

D

STRETCH  
FRENCH TERRY  
COLORS



Royal



Navy



White



Pewter



Black

NEW  
PRINT!

**A. ZIPPERED CURVED NECKLINE TOP** Soft curved neckline with self piping. Center front opens with smooth face zipper. Features modesty placket. Back darts and side slits. Approx. length for medium 69cm Shown in Grenadine. Available in all colors shown below.

**BSS979 XS-XL , 2X-3X**

**B. STRETCH FRENCH TERRY JACKET** Zip front hi low hemline, back is longer than front. Made of poly/cotton/spandex knitted terry cloth fabric. Approx. length for medium 68cm Stretch french terry 50/45/5 poly/cotton/spandex. Available in colors shown above. Shown in Black.

**FT994 XS-XL , 2X-3X**

**C. ZIP FRONT TOP** **NEW** Smooth face zipper, roll-up sleeves with silver button tabs. Four pockets with cell phone pocket. Tailored fit, back darts and side vents. Approx. length 79cm. Shown in Black. Available select colors shown below.

**BSS237 XS-XL , 2X**

**D. BODACIOUS BLOOMS BLACK** V-neck Five Pocket top. Coordinates with White, Black, Orchid, Grenadine, Tangelo and Vivid Violet. Approx. length for medium 70cm.

**US689BKB XS-XL , 2X-3X**



# VEAUX STYLES ET LES NOUVELLES COULEURS

E. LARGE  
GROMMET TOP  
**NEW** Notched neckline  
with decorative eyelets  
with back darts and  
side vents. Four front  
patch pockets. Approx.  
length 69cm. Shown in  
Grenadine. Available  
in select colors shown  
below. BSS754  
**XS-XL 2X**

NEW  
STYLE!

E

Solids are cotton/  
poly/spandex  
2-Way Stretch  
Prints are cotton/ spandex

## BREATHABLE stretch

**YOUR BEST FRIEND IN A 12-HOUR SHIFT.**  
DESIGNED FOR EXCEPTIONAL COMFORT WITH  
THE FEATURES YOU NEED.





# contrast color

DESIGNED FOR MOVEMENT,  
WITHOUT BEING FRUMPY

## A. HENLEY Y-NECK TOP NEW

Y-neck band with three-snap closure. One chest pocket, four front pockets with cell phone pocket and pen loops. Tailored fit, back darts and side vents. Approx. length 68cm. Shown in Pewter. Available in select colors shown below. BSS489

XS-XL 2X

9  
SOLID  
COLORS

## ROOM FOR ALL!

Comfort and function in one. This new top boosts five pockets plus utility tape detailing.



F  
Fuchsia

R  
Ruby

S  
C Grenadine



## NEW STYLES AND COLORS!

**B. COLOR BLOCK TOP** Princess seams, raglan sleeves, side vents. Four pockets, plus one cell phone pocket. Approx. length for medium 69cm. Shown in Spearmint/Pewter/Silver. Available in colors shown below.

**BSS758 XS-XL, 2X-3X**



### C. SHIRT DRESS NEW

Front and back princess seams. Silver buttons at center placket and sleeve tabs. Decorative belt at waist in back. Two front pockets, one cell phone pocket, chest pocket with silver zipper. Approx. length 100cm. Shown in Pewter. Available in select colors shown below.

**BSS956 XS-XL, 2X**

### D. ROUNDED V-NECK TOP

Contrast trim, side vents, four pockets, back darts. Approx. length for medium 69cm. Shown in Spearmint/Silver/Pewter. Available in colors shown below.

**BSS488 XXS-XL 2X**



**E. JACKET WITH RIB COLLAR AND CUFFS** Snap front with rib neck band and cuffs and four front pockets. Approx. length for medium 71cm. Shown in Pewter. Available in select colors shown below.

**BSS985 XS-XL 2X**

**F. MOCK WRAP TOP WITH KNIT PANELS** Three pockets and solid or contrast knit side panels. Knit is poly/spandex. Approx. length for medium 71cm. Shown in Spearmint/Pewter. Available in select solid colors and contrast colors shown below.

**BSSN948 XS-XL 2X-3X**





## A. COLOR BLOCK ASYMMETRIC TOP

**NEW** Tailored fit. Softly curved V neck with top stitch detail.

Contrast front panel, four pockets, side vents, and back darts. Approx. length for medium 68cm. Shown in Navy/Tangelo.

Available in color combinations shown below. **BSS873 XS-XL**, 2X-3X

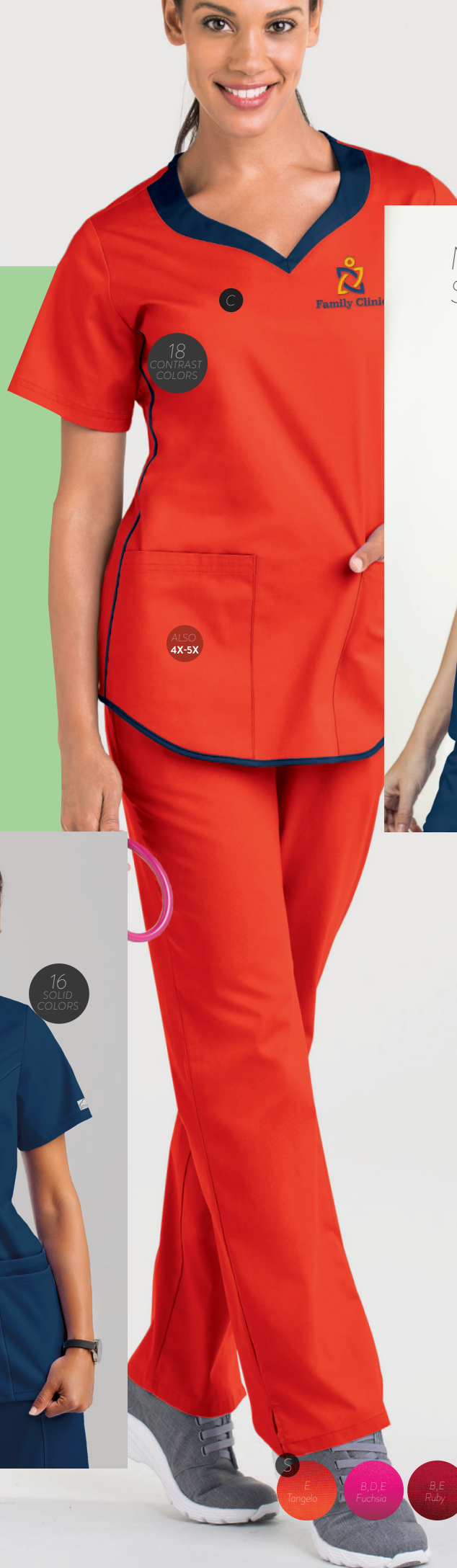


## B. SMOOTH FACE ZIPPER TOP

Soft curved neckline with piping. The center front opens with smooth face zipper. Princess seam has four pockets. Back darts and side slits. Approx. length for medium 69cm. Shown in Navy. Available in select colors shown below. **BSS804 XS-XL**, 2X



Full zipper  
four pockets



NEW  
STYLE!

## C. SWEETHEART NECK TOP

Contrast collar and contrasting trim at the hem and sides. Three pockets; two front and a hidden cell phone pocket. Back darts. Approx. length for medium 28". Shown in Tangelo w/ Navy.

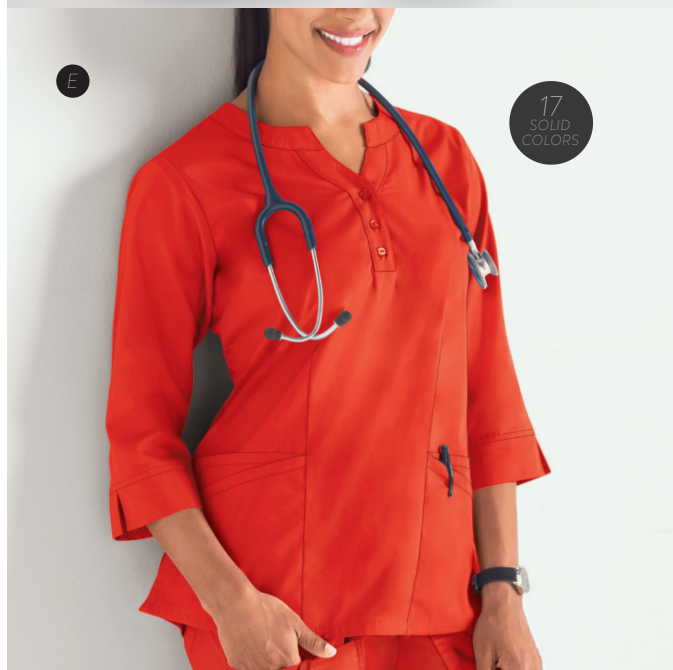
Available in color combinations shown below. **BSS824 XS-XL**, 2X-3X, 4X-5X





# Ease + Style in stretch

AIMER CE QUE VOUS PORTEZ, PEUT CHANGER VOTRE JOUR



**D. BUTTON FRONT TOP** V-neck band opens into button down front with back yoke and drop back hem line. Zippered chest pocket and two bottom front pockets. Side vents and back darts. Approx. length for medium 69cm. Shown in Navy. Available in select colors shown below. **BSS916 XS-XL, 2X**

**E. 3/4 SLEEVE TOP** Front v-placket with 3 button closure. Front and back darts, side slits. Two double front pockets. 3/4 sleeves with slits. Approx. length for medium 79cm. Shown in Tangelo. Available in select colors shown below. **BSS584 XS-XL, 2X-3X**

**F. LUAU FLORAL NAVY** **NEW** V-neck five pocket top. Coordinates with Navy, Royal, Ceil Blue, Teal and Ruby. Approx. length for medium 27 1/2". **US689LFL XS-XL 2X-3X**

**G. FLEECE JACKET** Mock neck collar, front & back yoke, princess seam piping with front pockets and zipper. Approx. length for medium 66cm. Shown in Navy. Available in color combinations shown below. 100% polyester fleece. **BSS937 XS-XL, 2X**

cotton/poly/spandex, all prints are cotton/spandex





# New Stretch

STYLE IN MOTION WITH  
ZIPPER AND TRIM DETAILING

SOLIDS +  
PRINTS  
IN  
STRETCH

8  
NEW COLORS  
JUST IN  
TIME FOR  
SPRING!



10  
SOLID  
COLORS

A



NEW  
PRINTS

B



C

20  
SOLID  
COLORS

five  
pockets  
for all  
your  
gear

**A. ZIP PEPLUM TOP** V-neckline opens into zipper at center front. Front and back darts. Tulip shape front peplum with two pockets and a cell phone pocket. Approx. length for medium 69cm. Shown in Vivid Violet. Available in select colors shown below. **BSS246 XS-XL 2X-3X**

**B. FLUTTER-FLIES CEIL** **NEW** Modern V-neck Top. Ceil Blue twill tape. Coordinates with Butter-Soft Stretch Ceil Blue, Royal, Vivid Violet and Navy. **US362CFL XS-XL 2X-3X**

**C. V-NECK FIVE POCKET TOP** Left chest pocket with a snap close tab and two front double pockets, one with a pen slot. Snap close tabs on the sleeves. Back darts and side slits. Approx. length for medium 69cm. Shown in Turquoise. Available in all colors shown below. **BSS689 XS-XL , 2X-3X , 4X-5X**

**D. ROUNDED V-NECK TOP** Contrast trim, side vents, four pockets, back darts. Approx. length for medium 68cm. Shown in Vivid Violet/Silver/Seafoam. Available in colors shown. **BSS488 XXS-XL 2X**

**E. BORA BORA CEIL** **NEW** V-neck Five Pocket Top. Coordinates with Butter-Soft Stretch Ceil Blue, Eggplant, Caribbean Blue, Teal and Turquoise. **US689CEB XS-XL , 2X-3X**

**F. CURVED NECK TOP** Curved shape neckline has piping with front and back yoke. Princess seam has four pockets. Back darts and side vents. Approx. length for medium 69cm. Shown in Turquoise. Available in select colors shown below. **BSS346 XS-XL 2X**

cotton/poly/spandex. All prints are cotton/spandex.







D

NEW  
COLOR!

9  
SOLID  
COLORS

- Vivid Violet / Silver/Seafoam
- Spearmint / Silver/Pewter
- Seafoam / Silver/Navy
- Pewter / Silver/Seafoam
- Black / Silver / Vivid Violet
- Navy/Silver/Seafoam



E

NEW  
PRINT!

F

flattering  
neckline  
and princess  
seams

17  
SOLID  
COLORS



ELASTIC WAIST



DRAWSTRING



CARGO

- S ACF Vivid Violet
- ACF Eggplant
- ACF Navy
- ACF Royal
- ACF Cel Blue
- C Turquoise
- S C Seafoam
- C Teal
- S C Spearmint
- ACF White
- CF Cool Grey
- CF Indigo Denim
- C Heather Grey
- ACF Heather Charcoal
- ACF Pewter
- ACF Black



# Layer it, mix it

## EVERYDAY ESSENTIALS



**S**  
SEASONAL  
COLOR  
Available  
for a limited  
time

**A. MODERN V-NECK TOP** Classic v-neck band has front yoke with twill tape tab for ID card. Three pockets and one with divided section. Approx. length for medium 69cm. Shown in Seafoam. Available in all colors shown below. **BSS362 XS-XL, 2X-3X, 4X-5X**

**B. SNAP FRONT JACKET** Front and back princess seams. Hidden chest pocket with a snap tab. Elastic cuffs. Approx. length for medium 71cm. Shown in Navy. Available in select colors shown below. **BSS808 XS-XL, 2X-3X**

**C. ZIPPERED CURVED NECKLINE TOP** Soft curved neckline with self piping. Center front opens with smooth face zipper. Features modesty placket. Back darts and side slits. Approx. length for medium 69cm. Shown in Indigo Denim. Available in select colors shown below. **BSS979 XS-XL, 2X-3X**

**D. V-NECK MOCK WRAP TOP** Princess seams, two patch pockets, plus a hidden cell phone pocket. Back darts and side slits. Approx. length for medium 69cm. Shown in Seafoam. Available in select colors shown below. **BSS929 XS-XL, 2X-3X**



NEW  
STYLE  
AND  
COLORS!

E

Stretch  
knit  
panels

2 SOLIDS AND  
4 CONTRAST  
COLORS

Vivid Violet/  
Black

Spearmint/Navy

Seafoam/Navy

Pewter/Black

Stretch Solids are  
cotton/poly/spandex,  
all prints are  
cotton/spandex

**E. ROUNDED V-NECK TOP WITH KNIT  
PANELS** **NEW** V-neck with knit detail at neckline,  
sleeves and side panels. Two front pockets with cell  
phone pocket. Tailored fit, back darts and side vents.  
Knit is poly/spandex. Approx. length 68.5cm. Shown in Sea  
Foam/Navy. Available in select solid colors shown  
and contrast colors shown left. **BSS844 XS-XL  
2X-3X**

**F. PAINTED  
PAISLEY NAVY**  
**NEW** Modern V-neck  
top. Navy twill tape.  
Coordinates with Navy,  
Ceil Blue, Royal and  
White. **US362NAP  
XS-XL, 2X**

F





# layer it, mix it

## EVERYDAY ESSENTIALS

NEW  
COLOR!



NEW  
PRINT!

**C. BODACIOUS BLOOMS NAVY**  
Modern Vneck Top.  
Navy twill tape loop.  
Coordinates with  
Navy, Royal, Black  
and Turquoise.  
US362NBO  
**XS-XL 2X-3X**



B

13  
SOLID  
COLORS



Empire  
waist



**A. VEST WITH KNIT SIDE PANELS** Zip front. Solid or contrast knit side panels. Two double entry patch pockets, flap opening with snap closure. Approx. length for medium 69cm. Knit panels are 90/10 poly/spandex. Shown in Sea Foam/Navy. Available in select colors below and contrast colors shown above. **BSS936 XS-XL, 2X-3X**

**B. EMPIRE WAIST JACKET** Button front with two front pockets and a two panel back. Sleeve cuffs have slits. Approx. length for medium 67cm. Shown in Navy. Available in select colors shown below. **BSS996 XS-XL, 2X**

Butter-Soft  
Stretch Solids  
cotton/poly/spandex  
all prints are  
cotton/spandex







## ADVANCED STRETCH

2-WAY POLY/SPANDEX  
MOISTURE WICKING WASH-N-WEAR



**B** NEW  
FLAT  
FRONT  
PANT

Reg / 1cm

NEW  
LACE  
UP TOP

**A**

NEW  
LACE  
UP TOP

**A**

NEW  
styles

PANTS AND  
TOPS IN EASY  
STRETCH

LIGHTWEIGHT,  
COMFORT,  
UNSTOPPABLE  
PERFORMANCE

SOAR THROUGH  
ANY SHIFT  
IN OUR EASY  
STRETCH  
POLY/SPANDEX  
MICROFIBER  
STRETCH FABRIC



# IT'S ALL IN THE DETAILS

PERFORMANCE STRETCH | MODERN FITTED STYLES | DESIGN ELEMENTS | NEW PRINTS



**A. LACE UP TOP WITH EYELETS** NEW  
 Deep v-neck with lace-up detail, silver eyelets and modesty panel. Four front pockets. Relaxed fit, back darts and side vents. Approx. length for medium 68cm. Available in select colors shown below. Shown in Royal. **BU222**  
**XS-XL, 2X-3X**



**B. FLAT FRONT PANT** NEW  
 Straight leg, drawstring elastic back waist, sits at natural waist. Two front pockets, one double Velcro cargo pocket. Side vents. Available in colors shown below. Shown in Royal.  
**REGULAR BU216 XS-XL, 2X-3X**



**C. FLORAL GARDEN WHITE** NEW  
 Henley top. Coordinates with Flirt, Ceil Blue, Emerald and Turquoise. Approx. length for medium 69cm. 96/4 Poly/Spandex.  
**TS856WHG XS-XL, 2X-3X**





new  
hues  
IN STRETCH



**A. HENLEY TOP**

Four pockets, back darts and side slits. Approx. length for Medium 68cm. Shown in Glazed Melon.

**BU856 XS-XL, 2X-3X**

**B. SPACIOUS BOUQUET TURQUOISE**

**NEW** Raglan sleeve top. Approx. length for Medium 68cm. Coordinates with Turquoise and Navy. TS728SBQ **XS-XL, 2X-3X**

**C. ZIP NECK TOP** Curved neckline, princess seams, back darts, side vents. Two double patch pockets with silver rivets. Shown in Pewter.

Approx. length for Medium 68cm. Available in all colors shown right. **BU597 XS-XL 2X-3X**



ALL PRINTS  
ARE 96 / 4  
POLY/SPANDEX

ALL SOLIDS  
IN EASY CARE  
POLY/SPANDEX

# MIX IT, MATCH IT

## UNBEATABLE STRETCH COMFORT FOR ANY SHIFT



**D. SHOULDER DETAIL TOP**  
Rounded v-neck, back darts, side vents. Shoulder lace-up detail with silver grommets. Two pockets, with cell phone pocket. Approx. length for medium 68cm. Shown in Turquoise. Available in select colors shown below. **BU492 XS-XL, 2X-3X**



**E. ATHLETIC JACKET**  
Zip front, raglan sleeves with rib knit cuffs, front and back princess seams. Four pockets with stitching detail. Approx. length for medium 68cm. Shown in Pewter. Available in select colors shown below. **BU386 XS-XL, 2X-3X**



**F. PEASANT 3/4 SLEEVE TOP**  
Shirred neckline with pearl stitch and lace up placket. Two scoop side seam pockets and side vents. Approx. length for medium 68cm. Shown in Glazed Melon. Available in select colors shown below. **BU774 XS-XL, 2X-3X**





ALL PRINTS  
96/4 POLY/  
SPANDEX

ALL SOLIDS  
IN EASY CARE  
POLY/SPANDEX

NEW  
SPACIOUS  
BOUQUET  
PRINT

NEW  
METAL DETAIL  
KEYHOLE TOP

**A. SPACIOUS  
BOUQUET FLIRT**  
**NEW** Raglan sleeve  
top. Approx. length  
for medium 68cm  
Coordinates with Flirt  
and Glazed Melon.  
**TS728FBQ XS-XL  
, 2X-3X**

**B. METAL DETAIL  
KEYHOLE TOP**  
**NEW** Tailored fit.  
Jewel neck with  
a key hole and  
fashion metal bar  
detail. Asymmetric  
front seam. Two  
side pockets. Back  
darts and side vents.  
Approx. length  
for medium 68cm.  
Available in select  
colors shown below.  
Shown in Black.  
**BU327 XS-XL  
2X-3X**



\*It is best to select from the same collections to ensure a perfect color match





ALL SOLIDS  
IN EASY CARE  
POLY/SPANDEX

**A. RAGLAN  
SLEEVE TOP**  
V-neck with four  
pockets, back darts  
and raglan sleeve.  
Approx. length for  
medium 68cm. Shown  
in Navy. Available in  
all colors shown right.  
**BU728 XS-XL 2X-3X**

**B. MITERED  
V-NECK SOLID  
TOP** Back darts,  
side vents. Four  
pockets with silver  
rivets. Approx.  
length for medium  
68cm. Shown in  
Emerald. Available in  
all colors shown right.  
**BU635 XS-XL 2X-3X**





PRINCESS  
SEAM  
V-NECK  
STRETCH  
PRINTS



FLATTERING  
FITTED  
LOOK

princess seam  
detailing

YOGA PANT  
#ABN214 shown in  
Soaring Blue, sold  
on left page.

C. PRECIOUS GARDEN  
WATERFALL NEW  
Mock wrap front. Pockets  
set into princess seam.  
Waterfall, Cell Blue, Soaring  
Blue and Lilac. TS843PGA  
XS-XL, 2X \$

new  
colors  
IN STRETCH

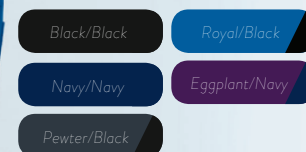


NEW  
STYLE!

D. V-NECK WITH KNIT  
SIDE PANELS

NEW Knit side panels and  
detail at neckline. Four front  
pockets, one cell phone  
pocket. Approx. length 68cm.  
Easy care poly/rayon/spandex.  
Shown in Royal w/ Black.  
Available in contrast and solid  
colors shown below. AB933  
XS-XL, 2X-3X

A. YOGA PANT  
#ABN214 Knit waistband  
pant, shown in Royal, sold on  
left page.



MODERN FIT  
"I LOVE THE  
WAY THEY  
FIT, LOOKING  
FORWARD TO  
GETTING MORE!"  
- NEW YORK



All prints are made of easy care 96/4 poly/spandex.  
75/22/3 poly/rayon/spandex.





## PETAL SLOPE POCKET TOP STRETCH PRINTS

A. PRECIOUS GARDEN  
WATERFALL L Coordinates with  
Waterfall, Soaring Blue, Lilac and Ceil Blue.  
TS202PGA **XS-XL**, 2X

B. POLKADOT ROSES BLACK  
Coordinates with Black, Waterfall,  
Royal and Pebble. TS202PRO  
**XS-XL**, 2X

C. POLKADOT ROSES EGGPLANT  
Coordinates with Eggplant, Lilac and White.  
TS202PGG **XS-XL**, 2X

## FEEL IT

LUXURIOUS SILKY COMFORT  
IN STRETCH SOLIDS THAT DELIVER

3M FABRIC  
SOIL RELEASE

MOISTURE  
WICKING

WASH-N-WEAR  
EASY CARE

**DRAWSTRING  
PANT** Two J pockets,  
elastic back, straight leg,  
side slits. Shown  
in Waterfall, Lilac,  
Eggplant. Available  
in all colors below.

**REGULAR** (Inseam  
approx. 78cm) AB212  
**XS-XL**, 2X-3X, 4X-5X

**PETITE** AB212P  
(Inseam approx. 73cm)  
**XS-XL**

**TALL** AB212T  
(Inseam approx. 83cm)  
**XS-XL**

Shown in Royal on  
right page



## PETAL SLOPE POCKET TOP STRETCH SOLIDS

**TWO POCKET  
ROUNDED  
V-NECK TOP**  
Flattering petal slope  
pockets. Approx. length  
for medium 68cm Shown  
in Waterfall. Available  
in all colors shown  
below and prints shown  
above. AB202  
**XS-XL** 2X-3X, 4X-5X

**FLATTERING  
FITTED  
LOOK**

with petal  
slope pockets





## LAYER IT WITH A ZIP FRONT JACKET

F

**F. ZIP FRONT JACKET** Smooth face center front zipper with rib cuffs. Four deep pockets, elastic shirring at back waist. Approx. length for Medium 73cm Shown in Royal. Available in select colors shown left. AB883 **XS-XL, 2X**

### DRAWSTRING PANT

Shown in Royal.  
Sold on left page.



new  
colors  
IN STRETCH



Elastic shirring at back waist.

## TOUCH OF COLOR

### G. FOUR POCKET ASYMMETRICAL TOP

Neckline and bottom pockets are have knit detailed inserts. Four front pockets fit into princess seams. Back darts, and side vents. Approx. length for medium 68cm. Shown in Teal/Navy. Available in the 11 color combos shown below. AB974 **XS-XL, 2X-3X**

Navy/Navy	Black/Black
Lilac/Navy	Royal/Black
Waterfall/Navy	Pebble/Black
Soaring Blue/Navy	Pewter/Black
Teal/Navy	Eggplant/Navy
Ceil/Navy	

All prints are made of easy care 96/4 poly/spandex.  
75/22/3 poly/rayon/spandex.



# Designed for the young-at-heart

ONLY AT UNIFORM ADVANTAGE

ULTRA SOFTNESS | BREATHABLE STRETCH | WRINKLE RESISTANT

**A. CLOUD NINE TOP** Front yoke with hidden chest pocket. Three front pockets with hidden cell phone pocket. Back darts and twill tape in side vents. Approx. length 69cm. Shown in Pewter. Available in all colors below **HY675 XS-XL, 2X-3X**

**B. ENCHANTING BUTTERFLY WHITE PRINT** Tailored fit. Curved neck band and placket with top stitch. Front and back darts, side vents with Black twill tape. Coordinates with Happy Scrubs Fuchsia, Royal and Black **TS913ENB XS-XL, 2X-3X**

**C. SOLACE TOP** Front yoke with top stitch detail and patch front pockets. Back darts and side vents with contrast twill tape. Approx. length 69cm. Shown in Turquoise with Black trim. Available in all colors shown below except Pewter and Royal. **HY892 XS-XL 2X-3X**

**D. JUBILANT JACKET** Tailored fit. Mock neck collar with top stitch. Two patch pockets. Contrast color zipper closure and piping in princess seam. Approx. length 69cm. Shown in Pewter. Available in Black, Pewter and Navy. **HY464 XS-XL 2X-3X**

**E. PRIMITIVE CHARM TURQUOISE PRINT** Tailored fit. Navy trim at neck. Front yoke with top stitch detail and two front pockets. Back darts and side vents. Coordinates with Happy Scrubs Turquoise, Royal and Navy **TS892PCT XS-XL 2X-3X**

GRACEFUL TEE  
#KN436

Happy Scrub solids are made of ultra soft stretch fabric 77/20/3 poly/rayon/spandex. All prints are easy care 96/4 poly/spandex.

A  
CLOUD NINE TOP

B  
ENCHANTING BUTTERFLY PRINT TOP

POCKETS  
5  
MULTI-TASKER PANTS

F  
BLISS YOGA PANT

Tailored fit. Yoga stretch knit waist, bootcut leg, ankle vents.

Reg 79cm

SIX  
colors  
WITH  
CONTRASTING  
TRIMS







C  
SOLACE  
TOP

D  
THE  
JUBILANT  
JACKET

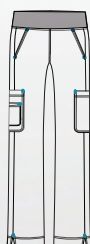
E  
PRIMITIVE  
CHARM  
PRINT TOP

G  
FOOTLOOSE  
PANT  
Tailored fit.  
Flat front  
waistband  
with  
drawstring,  
straight leg.

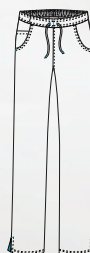


Reg 78cm

bottoms  
with  
style



F. BLISS YOGA PANT  
Knit waistband with elastic  
inside. Slash front pockets,  
two cargo pockets with cell  
phone pocket on the right.  
Bootcut with side vents.  
Available in all colors shown  
left. **HY859 XS-XL 2X-3X**



G. FOOTLOOSE PANT  
Flat front waistband with  
drawstring and elastic back.  
Scoop front pockets, one with  
cell phone pocket, two back  
pockets. Straight legs with side  
vents and contrast twill tape.  
Available in all colors shown  
left except Turquoise. **HY982  
XS-XL, 2X-3X**

get more  
happy  
NEXT PAGE



ULTRA SOFTNESS | BREATHABLE STRETCH | WRINKLE RESISTANT

TAILORED FIT STYLES

look great.  
feel great.  
do great.



**B**  
PRIMITIVE  
CHARM  
PRINT TOP



**C1**  
CLOUD  
NINE  
TOP



FOOTLOOSE  
PANT  
Pant #HY982  
Page 57

six  
colors  
WITH  
CONTRASTING  
TRIMS



**E. GRACEFUL TEE** Relaxed fit knit tee shirt with crew neck band. Long sleeve has thumb catch in cuff. 90/10 poly/spandex. Approx. length 63cm. Available in Happy Scrubs Pewter, Navy, Royal, Fuchsia, Turquoise and White. KN436 **XS-XL**, 2X-3X





## MORE THAN A FEELING... IT'S A MINDSET

A. SOLACE TOP Front yoke with top stitch detail and patch front pockets. Back darts and side vents with contrast twill tape. Approx. length 68cm. Shown in Navy with Fuchsia trim. Available in all colors shown bottom page 58 except Pewter and Royal. **HY892 XS-XL 2X-3X**

B. PRIMITIVE CHARM WHITE PRINT Tailored fit. Curved neck band and placket with top stitch. Front and back darts and side vents with black twill tape inside. Approx. length 68cm. Coordinates with Happy Scrubs White, Black, Fuchsia and Pewter. **TS913PCW XS-XL 2X-3X**

C1. CLOUD NINE TOP Front yoke with hidden chest pocket. Three front pockets with hidden cell phone pocket. Back darts and twill tape in side vents. Shown in Navy with Fuchsia trim. Approx. length 68cm. Available in all colors bottom of next page. **HY675 XS-XL, 2X-3X**

C2. CLOUD NINE TOP Shown in Fuchsia with Black trim.

D. GLEEFUL HOODED FLEECE VEST Contrast zipper closure and hood drawstring. Princess seam with welt pocket. 100% polyester fleece. Approx. length 68cm. Shown in Navy with Fuchsia drawstring. Available in Black, Navy, Pewter and Royal. **HY959 XS-XL, 2X-3X**

Happy Scrub solids are made of ultra soft stretch fabric 77/20/3 poly/rayon/spandex. All prints are easy care 96/4 poly/spandex.



E. GRACEFUL TEE

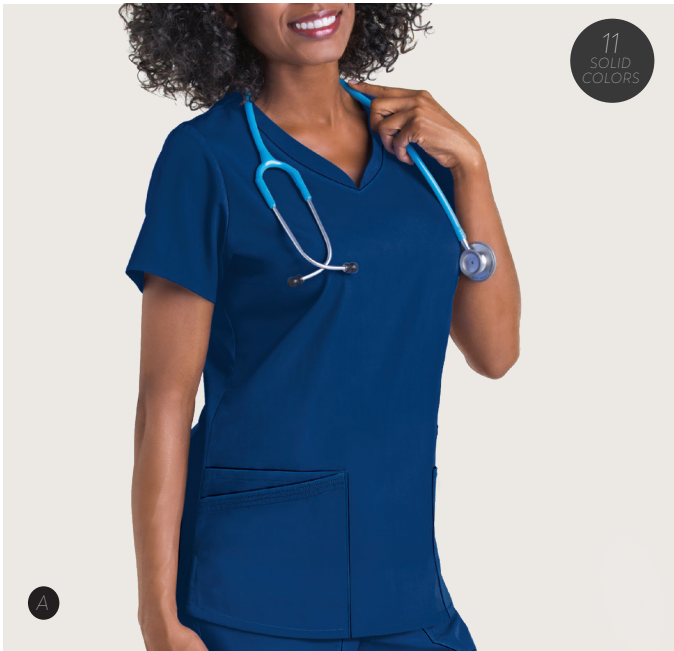


F. NEW FOREVER HEARTS TEE Burnout finish with heart design. 60/40 cotton/poly. Approx. length 68cm. Available in Fuchsia and Black. **KN999BHE XS-XL 2X-3X**



## EFFORTLESS ESSENTIALS

BOOST YOUR WARDROBE WITH SOLIDS AND COLOR BLOCK TOPS



### SWEETHEART NECKLINE TOP

This extra comfortable top features a sweetheart neckline, four front pockets, back darts for an attractive silhouette and side slides for increased movement. Approx. length for medium 68cm.

A. **SOLID** Shown in Navy. Available in select colors shown below. **STYLE #879 XS-XL, 2X-3X**

B. **CONTRAST** Shown in Turquoise with Navy. Available in all color combinations shown above. **CT879 XS-XL, 2X-3X**

### C. V-NECK TOP WITH SIDE KNIT PANELS

Three pockets and one hidden cell phone pocket. Snap tab on right front pocket. Approx. length for medium 68cm. Knit panels 90/10 poly/spandex.

**CONTRAST** Shown in Royal w/ Black. Available in colors shown above. **KNN862 XS-XL 2X-3X**

**SOLID** Available in select colors shown below. **KNN862 XS-XL 2X-3X**





## TWO POCKET MOCK WRAP

THIS FAN FAVORITE CAN BE CINCHED WITH ADJUSTABLE BACK TIES.  
AVAILABLE IN 8 COMBO COLORS AND 21 SOLID COLORS

D

### CONTRAST TRIM MOCK WRAP

Contrasting trim on the wrap line, pockets and sleeves.  
Approx. length for medium 68cm. Shown in Turquoise with Black. Available in colors shown left. CT668 XS-XL, 2X-3X

9  
COMBO  
COLORS

Royal/Black

Red/Black

Ceil Blue/Navy

Turquoise/Black

Dark Lilac/Wine

Granite/Eggplant

Eggplant/Granite

Black/Red

Navy/Ceil Blue

DRAWSTRING  
CARGO PANT

E

### SOLID MOCK WRAP

Shown in Marina.  
Available in select colors shown below. STYLE #668 XS-XL 2X-3X

21  
SOLID  
COLORS

# scrubwear

ALL SOLIDS  
IN EASY CARE  
POLY/COTTON

IT IS BEST TO SELECT FROM THE SAME  
COLLECTION TO ENSURE A PERFECT  
COLOR MATCH

A, E  
Black

E  
Dove

E  
Espresso

E  
Gecko  
Green

E  
Pink



23  
colors

GO-ALL-DAY PROFESSIONAL STYLES, PRICED RIGHT  
IN OUR EXCLUSIVE EASY CARE, WASH-N-WEAR POLY/COTTON



NO FUSS  
FIT PANT

23  
SOLID  
COLORS

#### A. FIVE POCKET V-NECK TOP

One chest pocket with a decorative snap tab and two front double pockets. Back darts, side slits and rounded hem. Approx. length for medium 68cm. Shown in Pink. Available in select colors shown below.

**STYLE #303 XS-XL, 2X-3X**



B

Two  
double  
J-pockets

- Royal/Ceil Blue
- Navy/Turquoise
- Fuchsia/Navy
- Wine/Granite
- Turquoise/Black
- Red/Black
- Eggplant/Navy
- Ceil Blue/Navy
- Dark Lilac/Black
- Black/Fuchsia
- Caribbean Blue/Navy
- Granite/Black
- White/Black

#### B. PRINCESS SEAM TOP

V-neck top with front yoke and princess seams. Two double J-pockets, side slits and back darts. Approx. length for medium 68cm. Shown in Fuchsia with Navy. Available in colors shown above.

**CT864 XS-XL, 2X-3X**



C

3/4 sleeves  
with notched  
cuffs

11  
SOLID  
COLORS

#### C. 3/4 SLEEVE SCALLOP NECK TOP

3/4 sleeves with notched cuffs. Four pockets, back darts and side slits. Approx. length for medium 68cm. Shown in Dark Lilac. Available in select colors shown below.

**STYLE #958 XS-XL, 2X-3X**





23  
SOLID  
COLORS

Two large  
pockets  
and one  
cell phone  
pocket



D

#### WARM-UP JACKET

Snap front closure with rounded collar. Two large pockets, one cell phone pocket and knit cuffs. Approx. length for medium 69cm. Shown in Fuchsia. Available in all colors shown below.

**STYLE #834 XS-XL 2X-3X**

+

"BEST TOP I'VE EVER GOTTEN. DOES NOT RESTRICT OR BIND ME."

E

23  
SOLID  
COLORS

EXTRA  
WIDE  
POCKETS

F

20  
SOLID  
COLORS

FIVE  
SNAP  
FRONT  
CLOSURE

#### E. THREE POCKET TOP

Extra wide pockets, plus a cell phone pocket.

The v-neck is cut to fit more comfortably. Side slits.

Approx. length for medium 73cm. Shown in Pink.

Available in all colors shown below left.

STYLE #61

**XS-XL 2X-3X**

#### F. SNAP FRONT TOP

Three pockets: two front pockets, one with pocket in pocket detail. Reinforced side slits. Approx. length for medium 28 1/2". Shown in Dark Lilac. Available in select colors shown left. STYLE #91 XS-XL 2X-3X

D,E,F  
Espresso

D,E,F  
Khaki

D,E,F  
Dove Grey

A,C,D,E,F  
White

A,C,D,E,F  
Granite

A,C,D,E,F  
Black





C  
Pewter

BACK  
PRINCESS  
SEAMS  
↓

D  
Lagoon

TWO FRONT  
POCKETS ,  
utility loop  
and one back  
pocket



F  
Pewter



SOLID STYLES ARE Brushed  
55/45 cotton poplin/poly

G  
Lagoon

FRONT  
PRINCESS  
SEAMS

H  
Hot  
Pink

4X-5X



E  
Hot Pink

TWO  
CARGO  
POCKETS  
and two  
slash  
pockets

ANKLE  
VENTS

**G. MODERN CLASSIC CARGO PANT** Mid-rise, flare leg, elastic back waist, adjustable drawstring, ankle vents. One back pocket, two slash pockets, three cargo pockets. Available in select colors shown below.  
**REGULAR** D86206 (Inseam approx. 76cm)  
**XXS-XL, 2X-3X 4X-5X**

**PETITE** D86206P (Inseam approx. 71cm)  
**XXS-XL, 2X**

**TALL** D86206T (Inseam approx. 85cm)  
**XS-XL, 2X**

not available in Lagoon

**H. DICKIES® MODERN CLASSIC PULL ON CARGO PANT** Tapered leg, sits at waist, full elastic waistband. Double cargo pocket, instrument loop, pen divider. Available in select colors shown below.  
**REGULAR** D86106 (Inseam approx. 77.5cm)  
**XXS-XL, 2X-3X, 4X-5X**

**PETITE** D86106P (Inseam approx. 71cm)  
**XXS-XL, 2X**

**TALL** D86106T (Inseam approx. 85cm)  
**XS-XL**

Not available in Grey, Galaxy, Hot Pink, Hunter, Lagoon, Red, Teal and Turquoise

A-H  
Hunter

A-H  
Teal

A-H  
Caribbean

C-H  
Turquoise

D, G, H  
Lagoon

A-H  
Ceil Blue

A-H  
Royal

A-H  
Galaxy

A-H  
Navy

A-H  
Grey

A-H  
Pewter

A-H  
Black





4-WAY  
STRETCH



STRONG &  
DURABLE



EASY CARE

front shoulder  
yokes with  
twill tape  
UTILITY  
LOOPS

snap closure  
UTILITY  
LOOPS

D  
Pewter

TWO  
PATCH  
POCKETS,  
twill tape  
loop and  
pen slot

G  
Ravishing  
Coral

H  
Turquoise

H. WOMEN'S ELASTIC  
WAIST PANT Natural rise,  
tapered leg. Two front slash  
pockets, one cargo pocket with  
twill tape utility loops, one cargo  
pocket with an inner pocket and  
two back pockets. Available in all  
colors shown below.

REGULAR D005  
(Inseam approx. 76cm)  
**XXS-XL, 2X-3X**

PETITE D005P  
(Inseam approx. 70cm)  
**XXS-XL, 2X**

TALL D005T  
(Inseam approx. 83cm)  
**S-XL, 2X**

tall not available in Ravishing Coral

FULL  
ELASTIC  
WAIST

STRETCH KNIT  
WAISTBAND

XXS not available in Ravishing Coral

ANKLE  
VENTS







91/9 poly/spandex

A. Front and back yokes, two patch pockets with grommet cable outlet, side slits, shirttail hem, black stitching details. 91/9 poly/spandex dobby. Approx. length Medium 71cm. Black, Blue Ice, Cosmic Pink and Vibrant Coral. **D731PWPT XXS-XL , 2X-3X**

B. **ROUNDED V-NECK** TOP **STRETCH**, front and back yokes, bust darts, seaming details, side slits. Approx. length Medium 71cm. Available in select colors shown far below. **D720 XXS-XL, 2X-3X**

C. **DYNAMIX™ MELANGE JACKET** **STRETCH**, melange space-dyed knit sleeves, back yoke with locker loop. Rib knit trim along cuffs, collar and hemline. Two front pockets. Approx. length Medium 71cm. Available in Black and Pewter. **D340 XXS-XL, 2X-3X**

D. **MELANGE V-NECK TOP** **STRETCH**, melange space-dyed knit front yoke, back yoke and neckline. Bungee ID loop, front princess seams, back seaming details, shirttail hem, side slits, two front rounded patch pockets. Approx. length Medium 71cm. Available in all colors shown below. **D740 XXS-XL , 2X-3X**



E. **WOMEN'S CARGO PANT** **STRETCH**, mid-rise, straight leg, two front slash pockets, full elastic waist with drawstring, front and back yokes, seaming details. Available in all colors shown below. **REGULAR D130 (Inseam approx. 77.5cm) XXS-XL , 2X-3X**

**PETITE D130P (Inseam approx. 71cm) XXS-XL , 2X**

**TALL D130T (Inseam approx. 86cm) XS-XL , 2X**

\* Actual color is neon, brighter than swatch shown below







F  
Royal  
4X-5X

52/45/3 cotton/poly/spandex twill with multi-needle contrast topstitching  
(White has tonal topstitching)



G  
Pewter  
4X-5X



H  
Hibiscus

SNAP TAB  
details

J  
Hibiscus

#### F. V-NECK TOP STRETCH

, front yoke seaming, chest pocket with pen slot, two patch pockets, cell phone pocket, multi-sectional utility loop, ID bungee loop, side slits. Approx. length Medium 67cm. Available in select colors shown right.

D817455 XXS-XL, 2X-3X 4X-5X

#### G. V-NECK TWO POCKET TOP STRETCH,

two patch pockets, bungee loop, side slits.

Approx. length Medium 70cm. Available in select colors shown right. D800 XXS-XL, 2X-3X, 4X-5X

#### H. MOCK WRAP TOP STRETCH

, two patch pockets, princess seams, multi-sectional pocket, side slits. Approx. length Medium 70cm Available in select colors shown right. D817355

XXS-XL, 2X-3X, 4X-5X

#### I. CARGO PANT STRETCH

, low-rise, straight leg, adjustable drawstring, full elastic waist. Two front pockets, one back pocket, instrument loops. Available in select colors shown right.

D100 (Inseam approx. 77.5cm) XXS-XL, 2X-3X, 4X-5X

#### J. DRAWSTRING CARGO PANT STRETCH,

low-rise, straight leg, full elastic waist, belt loops, knee darts. Nine utility pockets, instrument loop, triple pen holder, bungee loop. Available in select colors shown right.

REGULAR D857455 (Inseam approx. 77.5cm) XXS-XL, 2X-3X 4X-5X

PETITE D857455P (Inseam approx. 71cm)

XXS-XL, 2X-3X, 3X not available in Olive

TALL D857455T (Inseam approx. 85cm)

XS-XL, 2X-3X, tall not available in Hibiscus and Olive

CARGO  
POCKET  
with  
bungee  
loop

I  
Pewter  
4X-5X

ANKLE  
VENTS

XXS, 4X-5X not available in Hibiscus and Olive  
4X-5X not available in Olive and Riviera Blue

F-J  
White

G-J  
Hot Pink

G, J  
Hibiscus

F-J  
Crimson

G-I  
Wine

F, H, J  
Grape

G-J  
Eggplant

F, H, J  
Desert Sage

F, H, J  
Olive

F-J  
Icy  
Turquoise

G, I, J  
Caribbean  
Blue

F, H, J  
Riviera  
Blue

G-J  
Ceil Blue

F-J  
Royal

F-J  
Navy

F-J  
Pewter

F-J  
Dark Pewter

F-J  
Black



contemporary fit, easy care, no iron 75/21/4 poly/rayon/spandex twill

**A. WARM UP JACKET**

Snap front, front and back princess seams. Two patch pockets, one cell phone pocket, mock back belt, Approx. length Medium 72cm. Available in select colors shown below. D82310 **XS-XL, 2X-3X**

A  
White

mock  
back  
BELT

**B. V-NECK TOP**

Front slits, utility D-ring, front and back princess seams. Approx. length Medium 71cm. Available in all colors shown below. D82851 **XXS-XL, 2X-3X 4X-5X**

**C. ISLAND ORCHID**

Two front patch pockets. Approx. length Medium 71cm. 94/6 poly/spandex poplin. Stretch Black, Purplicious, Hot Pink, White and Icy Turquoise. D701ISOR **XS-XL, 2X-3X**

C  
Island  
Orchid

**D. DRAWSTRING PANT**

Mid-rise, flare leg, drawstring, elastic waist, double needle stitching, back leg seams, belt loops with logo eyelet snaps. Two patch pockets with pen slots and snaps, one back pocket. Available in all colors shown below.

REGULAR D82011 (Inseam approx. 77.5cm) **XXS-XL 2X-3X, 4X-5X**

PETITE D82011P (Inseam approx. 71cm) **XXS-XL 2X-3X**

TALL D82011T (Inseam approx. 85cm) **XS-XL, 2X**  
not available in Purplicious, Red and True Blue

**E. V-NECK CONTRAST TOP**

Back princess seams. Two front in-seam pockets, two inner pockets with a D-ring, side slits. Approx. length Medium 71cm. Available in select colors shown below, contrast trim shown above right. D715 **XXS-XL, 2X-3X**

BACK  
DARTS

SIDE  
SLITS



B  
Purplicious

TWO PATCH  
POCKETS  
one cell phone  
pocket

ONE CARGO  
POCKET  
with self loops

D  
Purplicious

ANKLE VENTS



XXS, 4X, 5X not available in Purplicious and True Blue

A,B,D,F,H White	B,D Khaki	B,D,E,G Hot Pink	B,D,F Red	B,D Purplicious	B,D,F,H Wine	A,B,D,F,H Eggplant	B,D,H Caribbean	B,D,H Teal	B,D,F,H Hunter	B,D True Blue
--------------------	--------------	---------------------	--------------	--------------------	-----------------	-----------------------	--------------------	---------------	-------------------	------------------



E  
Hot  
Pink

CONTRAST  
BANDING  
along  
neckline

- FOUR-WAY STRETCH
- EASE OF MOVEMENT
- SMOOTH TO TOUCH
- EASY CARE

F. MOCK WRAP TOP Front yoke, decorative logo eyelet trim, utility D-ring, three patch pockets, side slits. Approx. length Medium 72cm. Available in select colors shown below. **D85956 XXS-XL, 2X-3X, 4X-5X**

G. RIB KNIT CARGO PANT Mid-rise, straight leg. Two front slash pockets, D-ring, one hidden side-seam zipper pocket and two back pockets. Available in select colors shown below.

REGULAR D112 (Inseam approx. 77.5cm) **XXS-XL, 2X-3X**

PETITE D112P (Inseam approx. 71cm) **XXS-XL, 2X**

TALL D112T (Inseam approx. 85cm) **XS-XL, 2X**

H. ELASTIC WAIST PANT Mid-rise, low rise when waistband flipped down, flare leg. Two front pockets, one cargo pocket. Available in select colors shown below.

REGULAR D82012 (Inseam approx. 77.5cm) **XXS-XL 2X-3X, 4X-5X**

†† PETITE D82012P (Inseam approx. 71cm) **XS-XL, 2X-3X**

†† TALL D82012T (Inseam approx. 85cm) **XS-XL 2X**

†† Available in Black, Ceil Blue, Navy, Pewter, Royal and White

Black/  
Hot Pink

Hot Pink/  
Pewter

Navy/  
Ceil Blue

Pewter/  
Black

Royal/  
Black

D-RING  
with snap  
tab

G  
Hot Pink

CONTRAST  
RIB KNIT  
WAISTBAND ,  
drawstring  
(Navy has Navy  
waistband)

F  
Royal

**XXS-5X**

front and back  
PRINCESS  
SEAMS

FRONT  
PRINCESS  
SEAMS  
w/ contrast  
piping

CARGO  
POCKET ,  
logo eyelet  
snaps and  
pen loops

H  
Royal  
**4X-5X**

ANKLE VENTS





PROFESSIONALS STYLES ARE  
63/34/3 POLY/COTTON/SPANDEX POPLIN



4X-5X

E  
Hunter



F  
Royal

XXS-5X

TWO FRONT  
PATCH  
POCKETS,  
one cell  
phone  
pocket

TWO FRONT  
PATCH  
POCKETS ,  
two back  
pockets

H  
Royal

XXS-5X



G  
Caribbean

XXS-5X

PEN  
SLOT,  
instrument  
loops

I  
Caribbean

XXS-5X

COMFORT-FIT  
RIB KNIT  
waistband



ANKLE  
VENTS

#### H. WOMEN'S DRAWSTRING

PANT Mid-rise, straight leg, modern classic fit, elastic waistband, one cargo pocket, ankle vents. Available in all colors shown below.

REGULAR CK0160

(Inseam approx. 79cm)

XXS-XL , 2X-3X 4X-5X

PETITE CK0160P

(Inseam approx. 72.5cm)

XXS-XL , 2X

TALL CK0160T

(Inseam approx. 86cm)

XXS-XL , 2X

#### I. WOMEN'S PULL ON

CARGO PANT Mid-rise, straight leg, modern classic fit, two front patch pockets, two cargo pockets, two back pockets. Available in all colors shown below.

REGULAR CK170

(Inseam approx. 79cm)

XXS-XL , 2X-3X 4X-5X

PETITE CK170P

(Inseam approx. 72cm)

XXS-XL , 2X

### MATERNITY STYLES

A-I  
Navy

A, C-I  
Pewter

A-I



WOMEN'S



A, B, E-J  
Hunter

A, B, E-J  
Caribbean Blue

F, G, I, J  
Turquoise

A, B, E-J  
Celtic

A, B, E-J  
Royal

A, B, E-J  
Galaxy

A, B, E-J  
Navy

A, B, F, G, I, J  
Grey

A, B, E-J  
Pewter

A, B, E-J  
Black



A1, A2 White
A1 Yellow
A1, A2 Papaya
A1, A2 Hot Pink
A1 Red
A1 Wine
A1, A2 Electric Violet
A1 Lime Green
A1 Green Apple
A1, A2 Real Teal
A1 Hunter
A1 Caribbean
A1, A2 Malibu Blue
A1 Ceil Blue
A1, A2 Royal
A1, A2 Navy
A1, A2 Pewter
A1, A2 Black

A1 Long Sleeve  
A2 Short Sleeve



**BEST SELLING TEE!**  
LONG SLEEVE AVAILABLE IN  
18 WONDERWINK COLORS!

**A. SOLID COLOR SILKY TEE.**

Soft and luxurious 95/5 rayon/spandex, approx. length Medium 79cm".

A1. LONG SLEEVE W2009 **XS-XL**, 2X

Available in all colors shown above.

A2. SHORT SLEEVE W2209 **XS-XL**, 2X

Available in select colors shown above.

C  
W2079WIH  
Wine w/ Hot Pink

C  
W2079NHT  
Navy w/ White



STRIPED TEE  
AVAILABLE IN  
5 COLORS!



W2079BRD  
Black w/  
Red



W2079WIH  
Wine w/  
Hot Pink



W2079CTL  
Caribbean w/  
Real Teal



W2079NHT  
Navy w/  
White



W2079NMB  
Navy w/  
Malibu Blue

B  
W6608HPA  
Hot Pink/  
Pewter/Aqua

front and  
back  
PRINCESS  
SEAMS

W6608PH  
Light Pink/Pewter/Hot Pink

W6608HPA  
Hot Pink/Pewter/Aqua

W6608RGH  
Royal/Green Apple/Hot Pink

W6608NMG  
Navy/Malibu Blue/Green Apple

W6608PPG  
Pewter/Papaya/Green Apple

W6608PHB  
Black/Hot Pink/Pewter



BADGE  
LOOP  
with  
contrast  
trim and  
logo

SOLID STYLES ARE 52/45/3 cotton/poly/spandex

B. TRINITY COLOR BLOCK TOP **STRETCH**, side slits, contrast bar tacks, two front pockets. Approx. length Medium 67cm. Available in six colors shown above. **STYLE #** (as shown with swatch) **XS-XL**, 2X-3X

C. LONG SLEEVE STRIPED TEE Crew neck, logo tape detail at bottom, 95/5 rayon/spandex. Approx. length Medium 69.5cm. Available in colors shown below left. **STYLE#** (as shown with swatch) **XS-XL**, 2X

D. CONSTANCE SNAP FRONT JACKET **STRETCH**, LE badge holder, front princess seams, four pockets, rib knit cuffs. Approx. length Medium 73cm. Available in Black, Caribbean, Ceil Blue, Charcoal, Eggplant, Hot Pink, Navy, Papaya, Pewter and Royal. W8108 **XS-XL**, 2X-3X

E. PATIENCE TOP **STRETCH**, curved notched neck, front yoke, LE badge holder, contrast stitching, side slits. Two patch pockets, signature triple pocket. Approx. length Medium 69cm. Available in all colors shown below right on page 99. W6208 **XXS-XL** 2X-3X

F. VERITY TOP **STRETCH**, v-neck, triple-needle stitched shoulders. Two tilted pockets, one signature triple pocket, Contrast binding accents and bar tacks, side slits. Approx. length Medium 69cm. Available all in colors shown below right, except Raspberry. W6108 **XXS-XL** 2X-3X

G. JOY PANT **STRETCH**, straight leg, mid-rise, full elastic waist, drawstring. Two front double hook and loop fasteners pockets, one outer pocket, one back pocket with contrast bungee ID loop. Triple needle stitching at knees, ankle vents. Available in five colors shown right.

REGULAR W5508 (Inseam approx. 78cm) **XXS-XL**, 2X-3X

PETITE W5508P (Inseam approx. 71cm) **XXS-XL**, 2X-3X

TALL W5508T (Inseam approx. 83cm) **XS-XL**, 2X-3X

H. GRACE CARGO PANT **STRETCH**, mid-rise, flare leg, LE badge utility loop. Two front pockets, one back pocket, one cargo pocket, bungee loop. Available in all colors shown below right

REGULAR W5308 (Inseam approx. 78cm) **XXS-XL**, 2X-3X

PETITE W5308P (Inseam approx. 71cm) **XXS-XL**, 2X-3X

TALL W5308T (Inseam approx. 84cm) **XS-XL**, 2X-3X

Solid colors available online in Black, Caribbean Blue, Ceil Blue, Navy, Pewter and Royal. Style# W5308S and W6108S



# PERFORMANCE



MOISTURE  
WICKING



OMNI-  
STRETCH™



ANTIMICROBIAL  
ODOR CONTROL

97/3 POLY/SPANDEX

**A. V-NECK TOP** Center panel on front and back, side slits. Approx. length Medium 70cm Available in all colors shown below. J2445 **XS-XL**, 2X-3X

A  
Posh  
Pink

TWO  
ZIPPER  
POCKETS

NEW  
STYLE!

VETPRO EXCLUSIVE TOP

B  
Sea  
Blue

TWO  
ANGLED  
POCKETS  
outer utility  
loops

**B. CROSSOVER V-NECK TOP** Athletic top with crossover and cutout details at neckline, side slits. Approx. length Medium 64.5cm Available in all colors shown below. J2440 **XS-X2** 2X-3X

D  
Posh  
Pink

NEW  
STYLE!

CARGO  
POCKET  
with stretch  
utility loops

**C. BIO COLORBURST** Pen slot, side slits. Approx. length Medium 68.5cm. Jet Black, Sea Blue and Galaxy. B15208CO **XXS-XL** 2X-3X, 4X-5X

Colorburst

TWO  
PATCH  
POCKETS  
inner  
pocket

**D. NEW! YOGA PANT** Mid-rise, straight legs. Jockey logo stretch waistband, logo drawstring. Two front slash pockets, two back welt pockets, ankle vents. Available in all colors shown below. J2421 (Inseam approx. 81cm) **XS-XL**, 2X-3X

Posh Pink

Sea Blue

Royal

Galaxy

New Navy

Charcoal

Jet Black



performance

durability

comfort of stretch

A  
True  
Grape

stretch  
SIDE  
PANELS

B  
Pewter

C  
Sea Glass

NEW  
COLOR!

A. JULIET TOP STRETCH V-neck with knit trim, front and back princess seams, bust darts, curved hem, side slits. Two front patch pockets with tonal grosgrain ribbon and rivet detail. Approx. length Medium 70cm. Available in select colors shown far below. HE2245 XS-XL 2X

White

Nectar

Pretty  
In Pink

Purple  
Diva

Seaglass

Ceil

Turquoise

Dreamy  
Blue

Royal

Navy

Pewter

Black

AVAILABLE IN  
12 COLORS!

NEW!  
Nectar

NEW!  
Sea Glass

Pewter

MELISSA LONG SLEEVE TEE  
57/38/5 cotton/poly/spandex,  
approx. length for Medium 69cm,  
available in all colors shown left.  
HE5047 XS-XL, 2X-3X

D  
Pewter

one  
CARGO  
POCKET

E  
Sea Glass

NEW  
COLOR!

ANKLE  
VENTS

full elastic  
STRETCH  
WAISTBAND

NEW  
COLOR!

NEW  
COLOR!

A - D, H  
White

A, H  
Shocking Pink

C, E  
Sugar Coral

A, B, D, H  
Red

A, B, D, H  
Eggplant

A - D, H  
Wine

A, H  
True Grape

C, E  
Sea Glass

A, B, D, H  
Teal

B, D  
Hunter

A - D, H  
Caribbean

C, D  
Aqua Mist



NEW!



FEMININE



FITTED



FABULOUS

**SUPERIOR STRETCH**

TAILORED FIT

FADE RESISTANT

NO IRON

EASYCARE POLY/SPANDEX

A  
Pink  
Lemonade

NEW  
STYLE!

A. **NEW!**  
FLEX DREAMY  
SWEETHEART  
TOP **STRETCH** front  
princess seams, empire  
waist, back darts. Two  
front patch pockets.  
Longer back seam with  
flounce. Approx. length  
Medium 67cm . 88/12  
poly/spandex. Available  
in all colors shown  
below. **P3406 XS-XL  
, 2X-3X**

B. **NEW!**  
FLEX VIRTUE PANT  
**STRETCH** mid-rise,  
slim, straight legs,  
full elastic waist with  
drawstring. Two double  
front slash pockets,  
two side cargo pockets,  
two back pockets,  
ankle vents. 88/12 poly/  
spandex. Available in  
all colors shown below.

P3710 (Inseam approx.  
79cm) **XS-XL 2X-3X**

B  
Pink  
Lemonade

NEW  
STYLE!



Perfect Dream

NEW  
PRINT!

**NEW! PERFECT  
DREAM**

Sweetheart  
neckline, front  
princess seams,  
empire waist.  
Two front patch  
pockets, longer  
back seam with  
flounce. Approx.  
length Medium  
70cm 92/8  
poly/spandex.

Flex Black.  
**P3415PFD XS-XL  
, 2X-3X**



AVAILABLE IN  
11 COLORS!

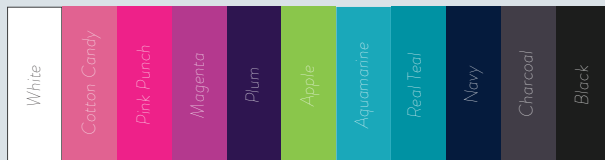
Long Sleeve Tee



**LONG SLEEVE TEE** Scoop neck, logo  
reflector on sleeve, 90/10 poly/spandex, approx. length  
Medium 67cm, available in all colors shown below.

P8499

**XS-XL , 2X-3X**





STYLES ARE  
E-Z flex 55/42/3 cotton/poly/spandex  
with contrast logos and bartacking

C. SIGNATURE TOP  
STRETCH , two angled  
welt pockets, inside  
pocket, hidden  
pen holder, side slits.  
Approx. length Medium  
67cm. Available in  
select colors shown  
right. **P8403 XS-XL**  
, 2X-3X

D. FLEX-IT TOP  
STRETCH , back  
knit panel, pen slot,  
two double pockets,  
three accessory  
pockets, elastic bungee.  
Approx. length Medium  
67cm . Available in  
select colors shown  
right. **P8458 XS-XL**  
, 2X-3X

E. FREEDOM TIE YOGA  
PANT STRETCH ,  
low-rise, straight leg,  
knit waist, functional  
drawstring, back yoke.  
Two front pockets,  
two back pockets with  
bungee. Knit waistband  
88/12 poly/spandex.  
Available in select  
colors shown right.  
P8715 (Inseam approx.  
79cm) **XS-XL 2X-3X**

F. SIGNATURE PANT  
STRETCH , sits at  
the natural waist,  
inside elastic waist,  
straight leg. One  
back pocket, ankle  
vents, contrast logo  
drawstring.  
Available in all  
colors shown right.  
REGULAR P8705  
(Inseam approx. 79cm)  
**XS-XL 2X-3X**

PETITE P8705P  
(Inseam approx. 73.5)  
**XS-XL**

TALL P8705T  
(Inseam approx. 85cm)  
**XS-XL**

C  
Steel w/ Cotton  
Candy Trim

VELCRO®  
CHEST  
POCKET  
with badge  
loop

D  
Bali Blue w/  
Shamrock  
Trim

NEW  
COLOR!

NEW  
COLOR!

TWO SIDE  
SEAM  
POCKETS  
with an  
inside  
pocket

NEW  
COLOR!

F  
Bali Blue w/  
Spearmint Trim

C-F  
Azalea w/  
Harbor Blue Trim

C-F  
Signature Purple  
w/ Charcoal Trim

C,F  
Wine w/ Powder  
Pink Trim

C-F  
Sangria w/ Real  
Teal Trim

C-F  
Spearmint w/  
New Navy Trim

C-F  
Real Teal w/  
Sangria Trim

C,F  
Caribbean w/  
Tango Pink Trim

C-F  
Ceil Blue w/  
Navy Trim

C-F  
Bali Blue w/  
Shamrock Trim

C-F  
Royal w/  
Passion Pink Trim

C-F  
New Navy w/  
Apricot Trim

C-F  
New Navy w/  
Spearmint Trim

C-F  
Steel w/ Cotton  
Candy Trim

C-F  
Charcoal w/  
Signature Purple Trim

C-F  
Charcoal w/  
Aruba Blue Trim

C,F  
Black w/ Pacific  
Trim

Black w/ Black



SOLID STYLES ARE  
100% poly dobby stretch,  
Rib Trim 92/8 poly/spandex  
Moisture wicking  
Wrinkle Free  
Performance Stretch

→ ID BUNGEE  
LOOP

A  
Galaxy

← rib knit  
SIDE  
PANELS

← ONE  
CARGO  
POCKET

B  
Galaxy



A, B White
A, B Flamingo
A, B Ruby
A, B Mulberry
A, B Wine
A, B Grape
A, B Caribbean
A, B Electric Blue
A, B True Ceil
A, B Royal
A, B Galaxy
A, B Navy
A, B Charcoal
A, B Black



STYLES ARE  
Brushed 55/45  
cotton/poly twill

SOLD IN 21  
COLORS!

C  
Love  
Geometry

← Slight  
gathering with  
adjustable side  
DRAWSTRING

← SIDE  
SLITS

D  
Flamingo



D White
D Camel
D Espresso
D Blush
D Flamingo
D Papaya
D Ruby
D Grape
D Eggplant
D Hunter
D Mint
D Turquoise
D Cool Blue
D True Ceil
D Royal
D Deep Sea
D Galaxy
D Navy
D Steel
D Charcoal
D Black





A. TOP PERFORMANCE

**STRETCH** mock wrap, side zipper detail, two angled welt pockets, back princess seams, side slits. Approx. length Medium 67cm. Available in all colors shown far left.  
**K316 XS-XL 2X-3X**

B. PEACE PANT PERFORMANCE

**STRETCH** lim fit mid-rise, straight leg, drawstring. Two front pockets, two back pockets, one zipper pocket, one cargo pocket. Available in all colors shown far left.  
**REGULAR K721** (Inseam approx. 80cm)  
**XXS-XL 2X-3X**,

**PETITE K721P** (Inseam approx. 29½")  
**XXS-XL 2X-3X**

**TALL K721T** (Inseam approx. 85cm)  
**XXS-XL**

C. **GEOMETRY** Mock wrap, two patch pockets, 100% cotton, approx. length for Medium 70cm Cool Blue, Flamingo, Turquoise and White. **K115LVG XS-XL**, 2X-3X

D. **PANT** Sits just below waist, boot cut, drawstring. Two front pockets, key loops. Available in all colors shown left.

**REGULAR K701N** (Inseam approx. 79cm)  
**XXS-XL 2X-3X**

**PETITE K701NP** (Inseam approx. 73.5cm)  
**XXS-XL 2X-3X**

**EXTRA PETITE K701NXP** (Inseam approx. 68.5cm)  
**XXS-XL**, Available in Black, Navy and Steel.

**TALL K701NT** (Inseam approx. 83cm)  
**XXS-XL**

E. **KATIE TOP STRETCH** mock wrap, front shoulder yokes, ID bungee loop. Two front pockets, hidden cell phone pocket, outer pocket with button detail, back darts and side slits. Approx. length Medium 70cm. Available in all colors  
**K374 XXS-XL 2X-3X**,

F. **BECCA TOP STRETCH** two front pockets, hidden cell phone pocket, side slits. Approx. length Medium 67.5cm Available in all colors shown below right. **K373 XXS-XL**, 2X-3X

G. **LAURIE PANT STRETCH** mid-rise, flare leg, contrast bar tacks, ankle vents. Available in all colors shown below right.  
**REGULAR K732** (Inseam approx. 79cm)  
**XXS-XL 2X-3X**

**PETITE K732P** (Inseam approx. 79cm)  
**XXS-XL 2X-3X**

**TALL K732T** (Inseam approx. 83cm)  
**XXS-XL**

H. **HOLLY PANT STRETCH** low-rise, straight leg, elastic waist, drawstring, two front pockets, two back pockets, ankle vents. Available in all colors shown below right.

**REGULAR K731** (Inseam approx. 79cm)  
**XXS-XL 2X-3X**

**PETITE K731P** (Inseam approx. 73.5cm)  
**XXS-XL 2X-3X**

**TALL K731T** (Inseam approx. 83cm)  
**XXS-XL**

95/5 poly/spandex microfiber

PERFECT FOR GROUPS

4-WAY STRETCH

MOISTURE WICKING

E  
Green Tea

F  
Royal

RIB KNIT side panels

front shoulder yokes with ID BUNGEE LOOP

OUTER WELT POCKET with button closure

TWO CARGO POCKETS with outer pocket and cell phone pocket

H  
Royal

G  
Green Tea

ONE CARGO POCKET, inner coin pocket, two back pockets

TWO FRONT POCKETS

RIB KNIT waistband

CONTRAST PRINT FACING DETAILS inside back neck, pant waist and inside pockets

Green Tea

Royal

Navy

Charcoal

Black



77/23 poly/rayon

**A. NEW! BUTTERFLY MEADOW**

Back yoke, side slits. Approx. length Medium 71cm 55/45 cotton/rayon. Black, Lilac Pearl, Moonstruck, Pistachio and White . GA4138BM **XS-XL** 2X-3X, 4X-5X

**B. GREY'S ANATOMY™ MARQUIS**

**V-NECK TOP** Two front angled pockets, one PDA pocket, side slits, angled back yoke. Approx. length Medium 71.5cm Available in select colors shown below. GA41452 **XS-XL** 2X-3X

**C. CARGO PANT**

Low-rise, straight leg, adjustable drawstring, elastic back waist. Two front slash pockets, one side zipper pocket, one welt cargo pocket, two welt back pockets. Available in select colors shown below. GA4277 (Inseam approx. 80cm) **XS-XL, 2X-3X**

**D. ACTIVE YOGA KNIT WAISTBAND PANT**

Low-rise, straight leg, yoga knit waist with elastic drawcord tie, ankle vents. Two side pockets and two back pockets. Front leg seaming. Available in select colors shown below.

REGULAR GA4276 (Inseam approx. 80cm) **XS-XL, 2X-3X**

PETITE GA4276P (Inseam approx. 75cm) **XS-XL**

TALL GA4276T (Inseam approx. 85cm) **XS-XL**

**E. ACTIVE V-NECK COLOR BLOCK TOP**

Contrast trim and piping along neck, two front patch pockets, one inner pocket, side slits, back darts. Approx. length Medium 71cm Available in all colors shown above right GA41466 **XS-XL, 2X-3X**

**F. MOCK WRAP TOP**

Two front pockets, divided pen pocket, empire waist with adjustable back tab, side slits. Approx. length Medium 68cm Available in all colors shown below. GA4153 **XXS-XL, 2X-3X, 4X-5X**

**G. ACTIVE COLOR BLOCK TOP**

Two patch pockets, small outer pocket, pen slots, side slits. Approx. length Medium 71cm Available in all colors shown far right. GA41435 **XS-XL, 2X-3X**

\* Actual Color is neon, brighter than swatch shown below

BACK YOKE with elastic shirring detail

TWO FRONT POCKETS, pen slot

C Moonstruck

A Butterfly Meadow

NEW PRINT!

front and back PRINCESS SEAMS with strapping details

B Pistachio

NEW COLOR!

D Pistachio

NEW COLOR!

ANKLE VENTS





NEW! BEACH GLOW

CUSTOMER FAVORITE!

F  
Beach Glow

NEW! UA®  
EXCLUSIVE  
COLOR!

H  
Beach Glow

CUSTOMER FAVORITE!

G  
STBGM  
Steel/  
Beach Glow/  
Moonstruck

NEW! UA®  
EXCLUSIVE  
COLOR!

FITTED  
BACK

D  
Steel

ANKLE  
VENTS



EXCLUSIVE  
COLOR!

E  
INBGM  
Indigo/Beach  
Glow/Moonstruck

NEW!  
EXCLUSIVE  
COLOR!  
INBGM  
Indigo/  
Beach Glow/  
Moonstruck

STBSC  
Steel/  
Black/Sea  
Coral

SREBG  
Scarlet  
Red/Black/  
Granite

INMP  
Indigo/  
Moonstruck/  
Passion Purple

GRW  
Granite/  
White/  
Taffy

STMA  
Steel/  
Moonstruck/  
Aqua Mist

BLRTM  
Black/  
Raspberry Tart/  
Moonstruck

NEW!  
COLOR!



H. FIVE POCKET PANT

Sits at the waist, slight flare leg, drawstring, elastic back waistband, two front pockets, coin pocket, two back pockets. Available in all colors shown below.

REGULAR GA4232 (Inseam approx. 80cm) **XXS-XL**, 2X-3X 4X-5X

PETITE GA4232P (Inseam approx. 75cm) **XXS-XL**, 2X  
2X not available in Beach Glow, Coolwater, Coral Crush, Currant, Galaxy, Granite and Scarlet Red

TALL GA4232T (Inseam approx. 85cm) **XXS-XL**

4X-5X not available in Aqua Mist, Beach Glow, Coolwater, Coral Crush, Currant, Galaxy, Granite, Lilac Pearl, Moonstruck, Pistachio, Raspberry Tart, Scarlet Red and Taffy.

NEW!  
UA®  
EXCLUSIVE  
COLOR!  
STBGM  
Steel/Beach  
Glow/  
Moonstruck

NEW!  
COLOR!

NEW!  
COLOR!  
LIPSS  
Lilac Pearl/  
Steel/Black

RTMB  
Raspberry  
Tart/Moon-  
struck/Black

NEW!  
COLOR!  
SCRGB  
Scarlet Red/  
Granite/  
Black

NEW!  
COLOR!  
PIMOS  
Pistachio/  
Moonstruck/  
Steel

NEW!  
COLOR!  
INPIN  
Indigo/  
Pistachio/  
Moonstruck

MOBLS  
Moonstruck/  
Black/  
Scarlet Red

STGBL  
Steel/  
Galaxy/  
Black

BLAMN  
Black/  
Aqua Mist/  
Moonstruck

B-D, F, H Royal	D, F, H Galaxy	B-D, F, H Indigo	B-D, F, H Moonstruck	B-D, F, H Granite	B-D, F, H Steel	B-D, F, H Black
--------------------	-------------------	---------------------	-------------------------	----------------------	--------------------	--------------------